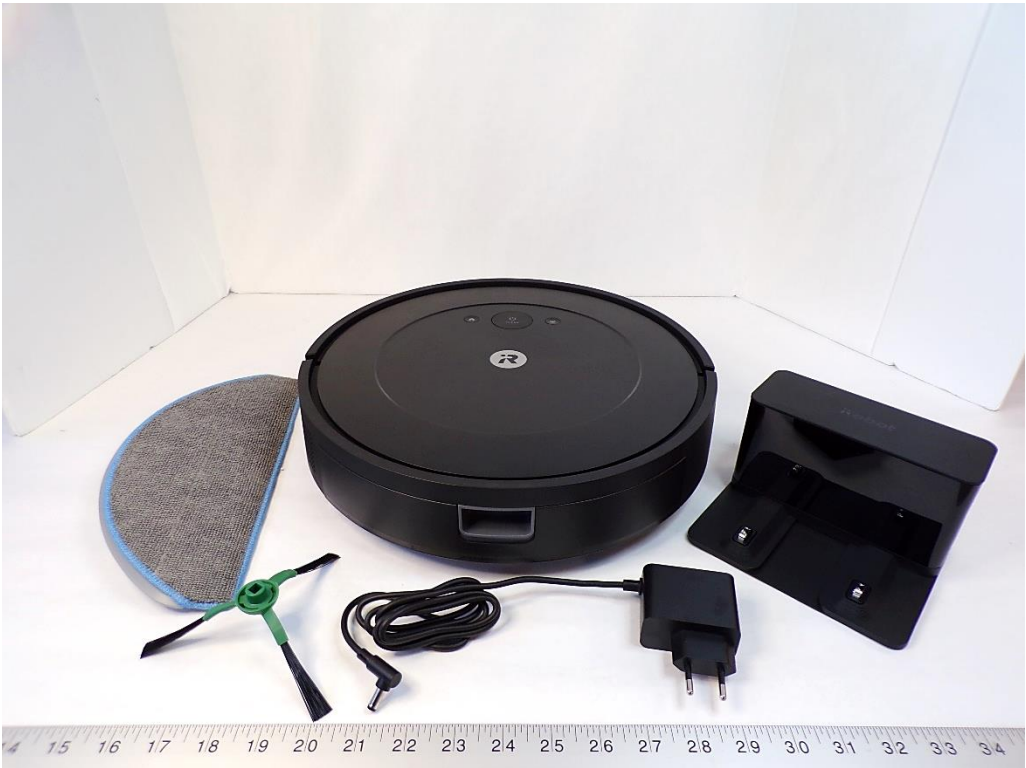



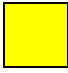

1. Manufacturer Information

Manufacturer:	iRobot Corporation
Address:	8 Crosby Drive Bedford, MA 01730 USA
Website:	www.irobot.com
File Number:	US24CF6Q.001



2. Product Information

Model Identification	RVG-Y1, ADN-N1, & APA-EU
Product Description	Roomba Essential robot, Roomba Essential Charging dock, & EU Power Supply
Type Designation(s):	Vacuum
WEEE Category:	Category 5 (Small Equipment)
Weight [g]:	2743.6g
Recyclability:	79.00%

	Type I	Material/components which must be removed and treated separately According to Annex II of the 2012/19/EU (WEEE) directive.
	Type II	Material/components which can disturb certain recycling processes.
	Type III	Material/components which have an economic value at end-of-life.

3. Recycling Information: (Optional)

- Are plastic parts >10g marked according to ISO 11469?
- Is the product manufactured of 20% recycled material?

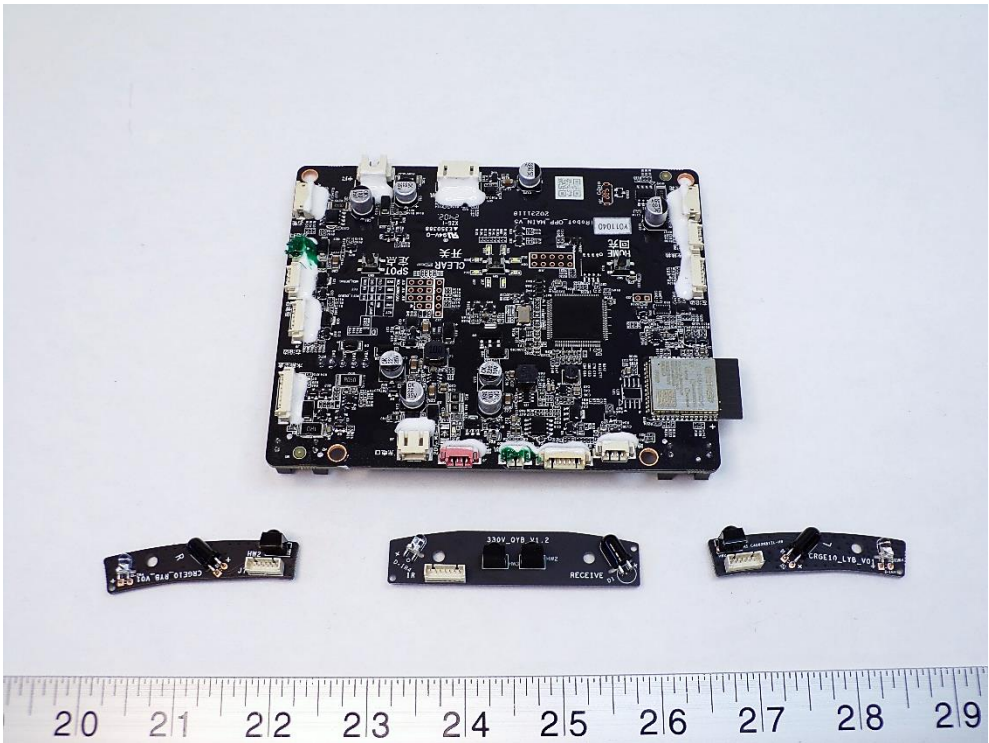
4. Directives and Standards: (Optional)

The following directives and standards have been considered:

- EN 50419:2006 - "Marking of electrical and electronic equipment in accordance with Article 11(2) of Directive 2012/19/EU (WEEE)
- 2012/19/EU - Directive 2012/19/EU of the European Parliament and of the Council of July 4, 2012 on waste of electrical and electronic equipment (WEEE)
- ISO 11469 - "Generic Identification and Marking of Plastic Products"



5. Instructions for removing materials/components which must be removed and treated separately:

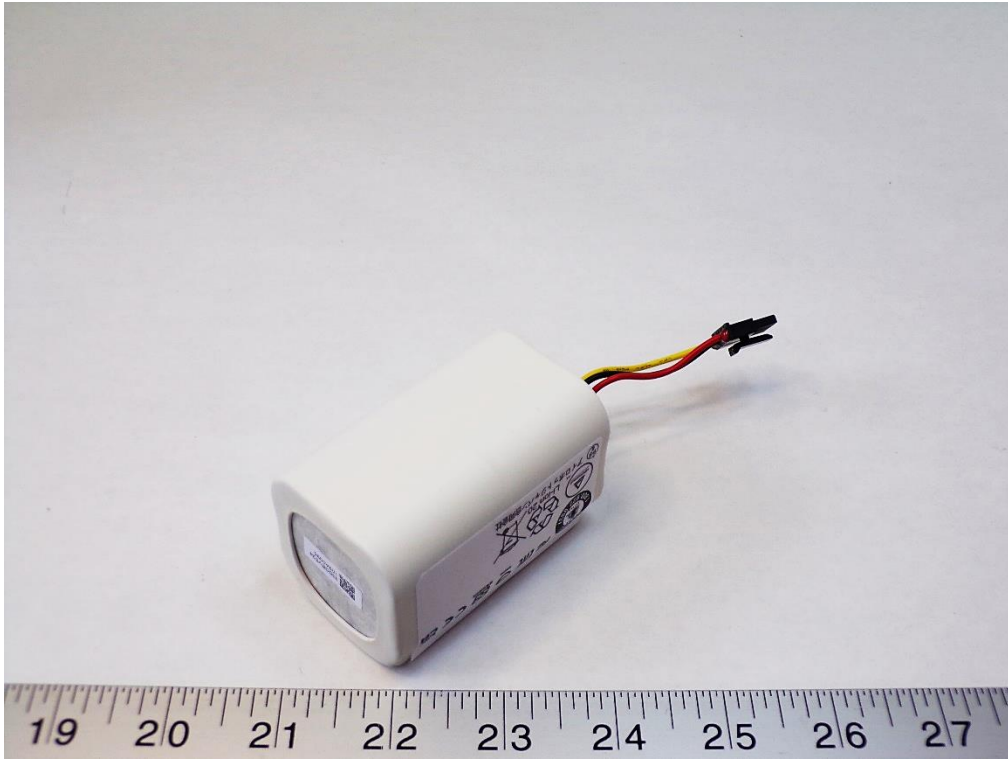


Recycling Information:

Nr.	Component	Material	Wt. (g)	Comments
1	PCB / Mixed Components	PCB	68.49	Treat Separately, 50% Recycle



5. Instructions for removing materials/components which must be removed and treated separately:



Recycling Information:

Nr.	Component	Material	Wt. (g)	Comments
2	Battery	Mixed	233.15	Treat Separately < Refer To Batteries Directive (2006/66/EC)>



5. Instructions for removing materials/components which must be removed and treated separately:

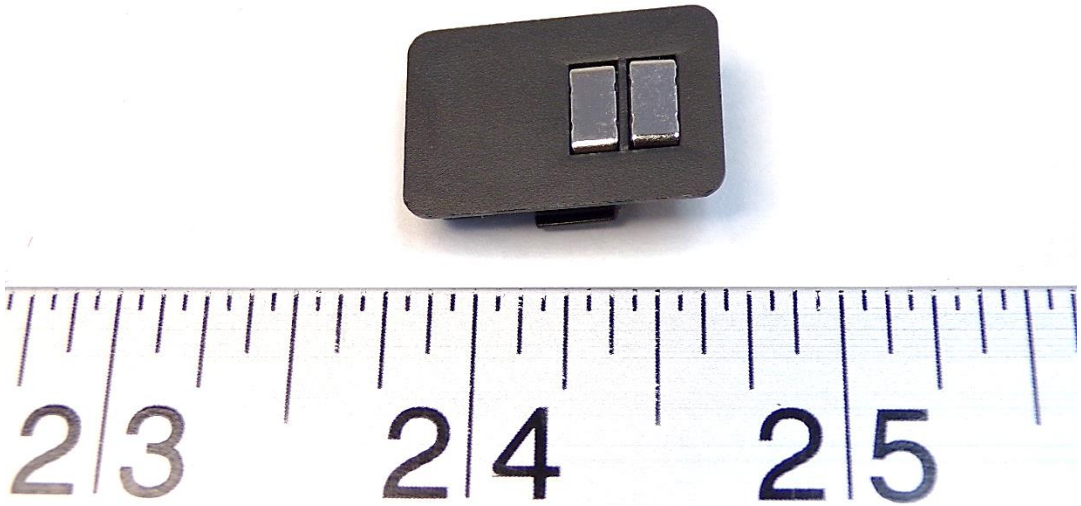


Recycling Information:

Nr.	Component	Material	Wt. (g)	Comments
3	Dust cleaner	Mixed	5.21	Treat Separately, 40% Recycle



5. Instructions for removing materials/components which must be removed and treated separately:

**Recycling Information:**

Nr.	Component	Material	Wt. (g)	Comments
4	Clip	Mixed	1.69	Treat Separately, 30% Recycle



5. Instructions for removing materials/components which must be removed and treated separately:

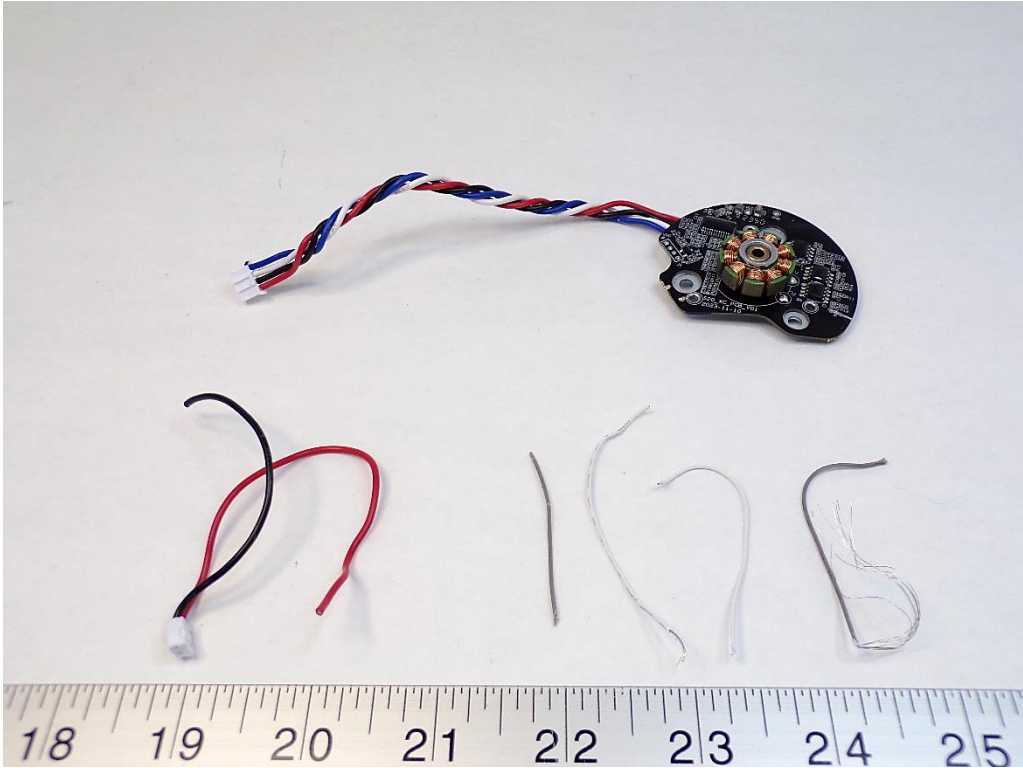


Recycling Information:

Nr.	Component	Material	Wt. (g)	Comments
5	Large Brush	Mixed	43.44	Treat Separately, 30% Recycle



5. Instructions for removing materials/components which must be removed and treated separately:



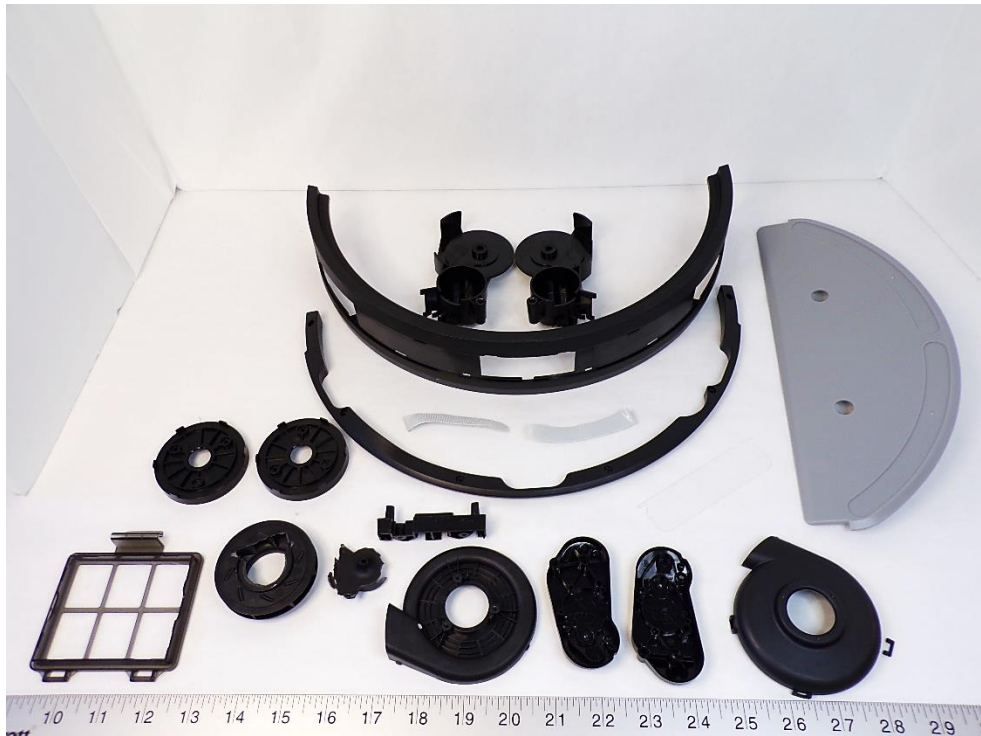
Recycling Information:

Nr.	Component	Material	Wt. (g)	Comments
6	Non-Reusable Cable	Mixed	27.22	Treat Separately, 50% Recycle

6.

Components/materials which may disturb certain recycling processes

1



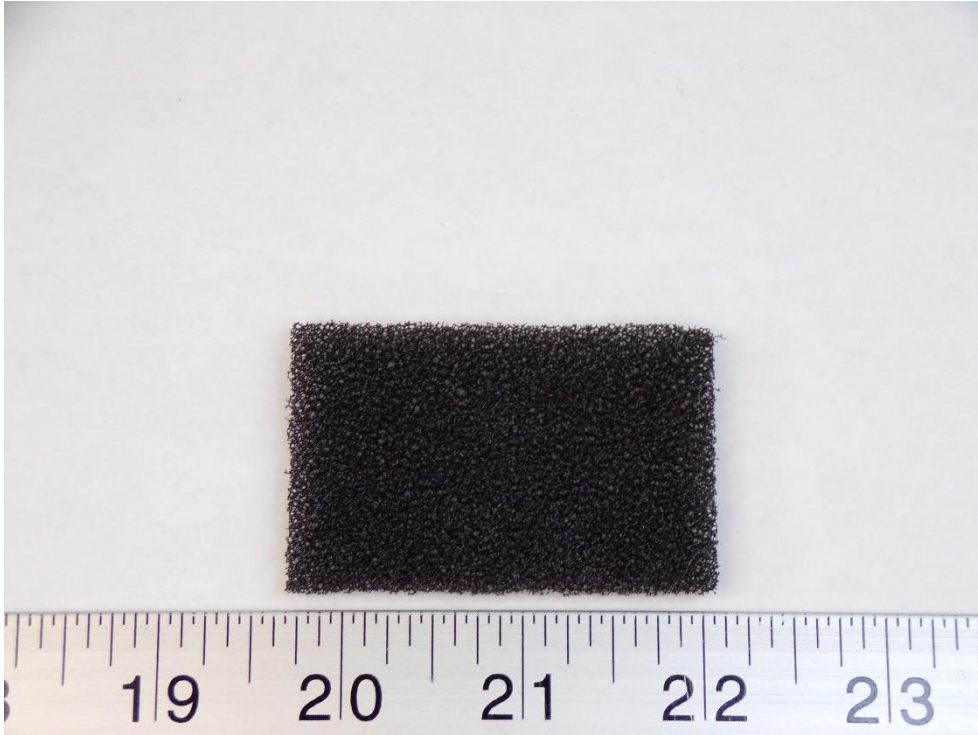
Recycling Information:

Nr.	Component	Material	Wt. (g)	Comments
1	Misc. Non-ID Plastic components	Non-ID Plastic	347.54	Incinerate



6. Components/materials which may disturb certain recycling processes

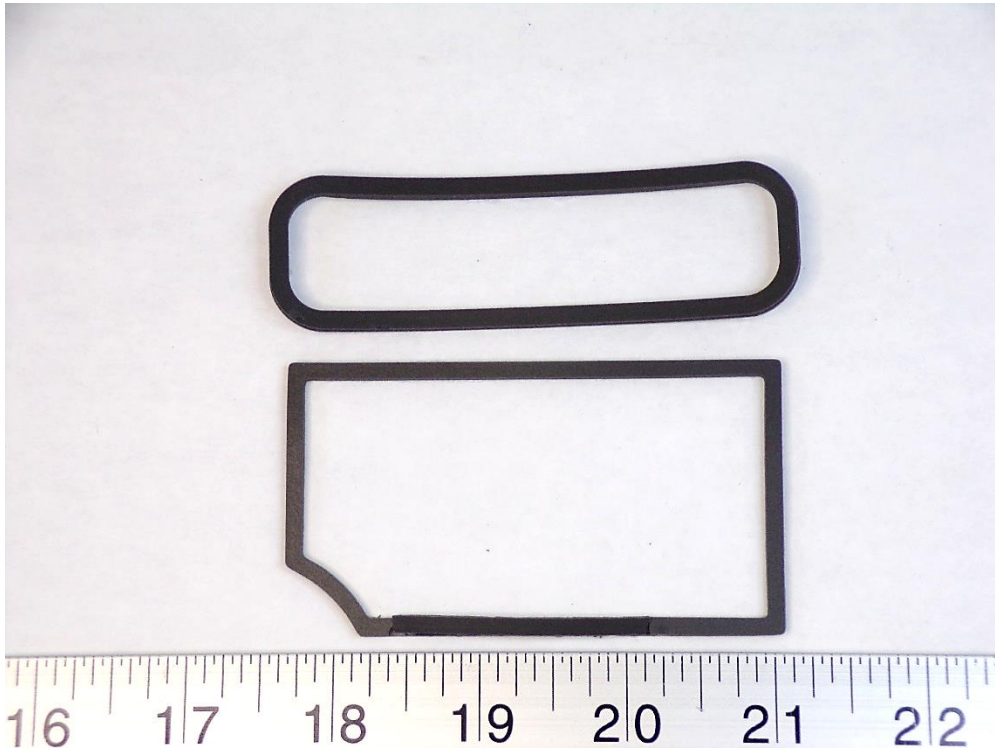
2

**Recycling Information:**

Nr.	Component	Material	Wt. (g)	Comments
2	Foam	Non-ID Foam	0.39	Waste

6. Components/materials which may disturb certain recycling processes

3



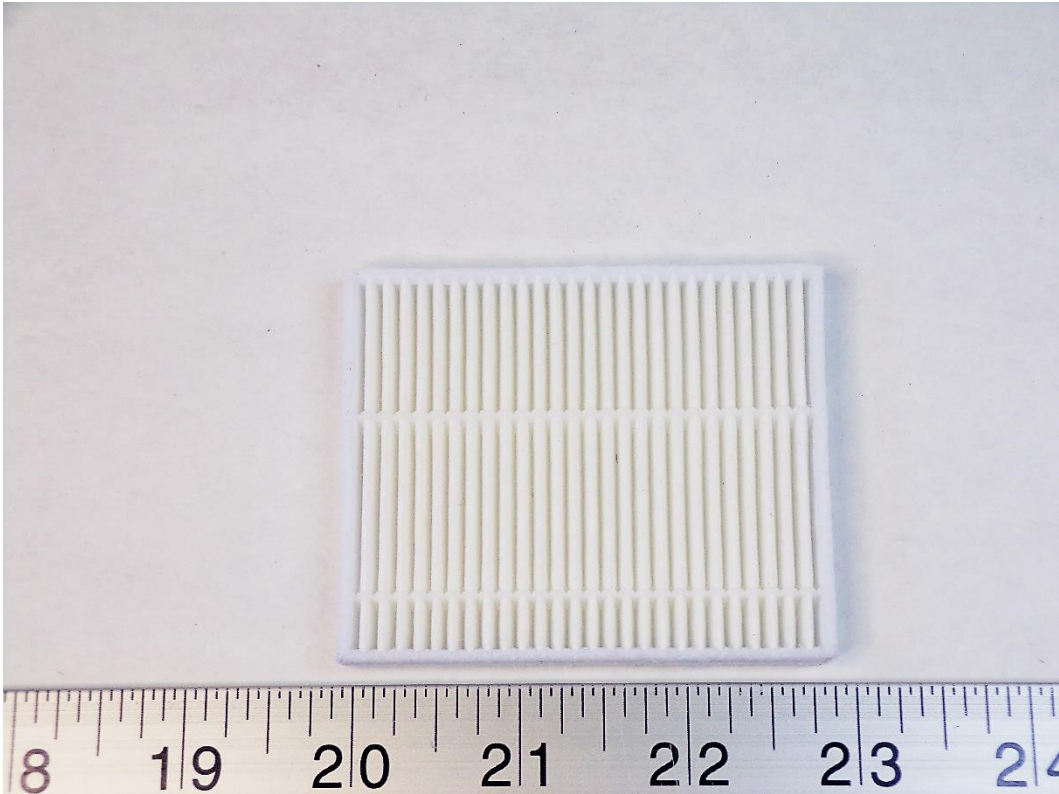
Recycling Information:

Nr.	Component	Material	Wt. (g)	Comments
3	Misc. Foam/Plastic Washer	Mixed	1.55	Waste



6. Components/materials which may disturb certain recycling processes

4

**Recycling Information:**

Nr.	Component	Material	Wt. (g)	Comments
4	Filter	Mixed	5.70	Waste

6.

Components/materials which may disturb certain recycling processes

5



Recycling Information:

Nr.	Component	Material	Wt. (g)	Comments
5	Rubber with Buttons	Mixed	13.59	Waste

6. Components/materials which may disturb certain recycling processes

6



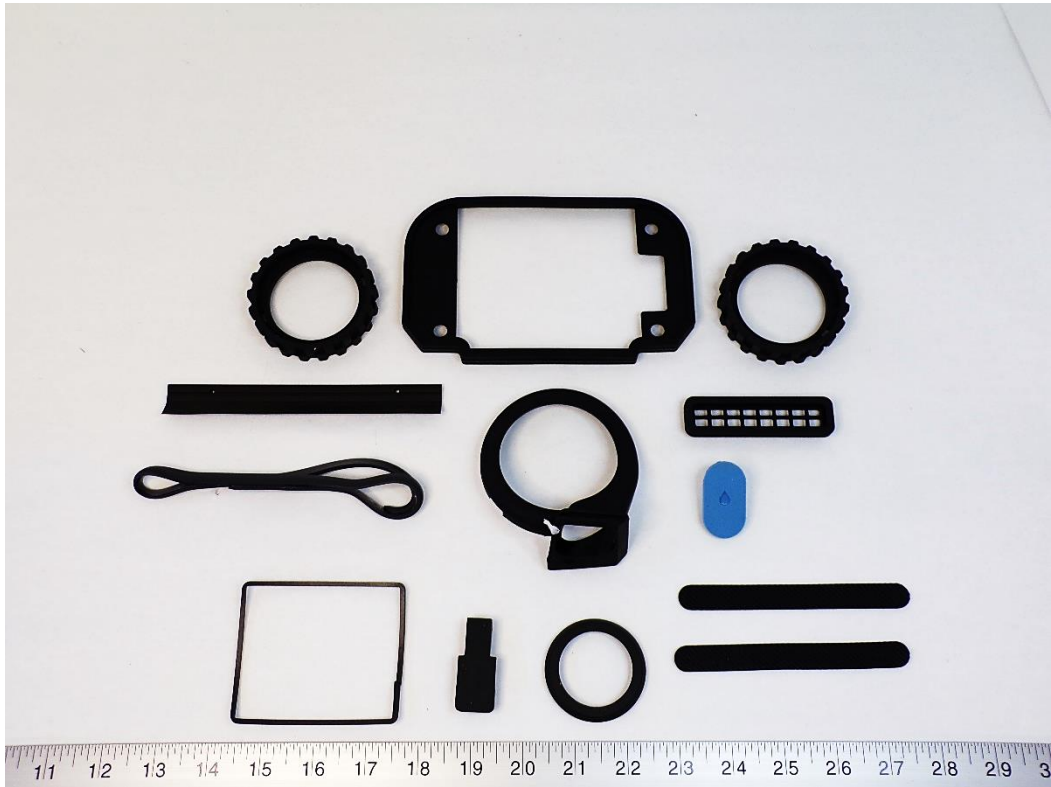
Recycling Information:

Nr.	Component	Material	Wt. (g)	Comments
6	Labels	Non-ID Plastic	2.73	Incinerate

6.

Components/materials which may disturb certain recycling processes

7

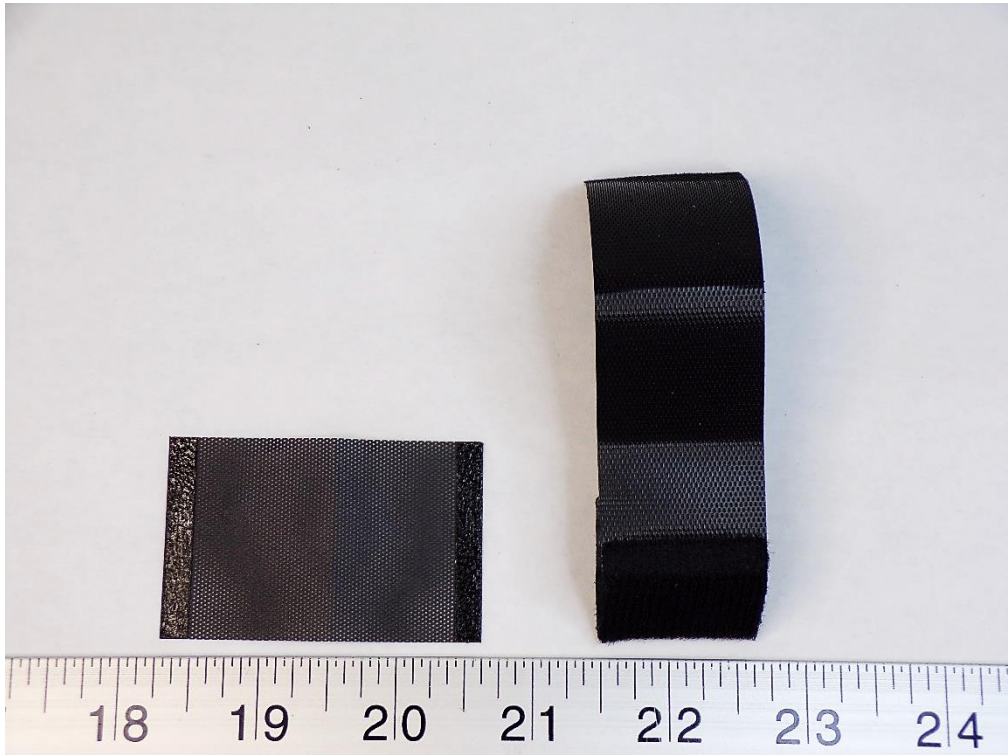


Recycling Information:

Nr.	Component	Material	Wt. (g)	Comments
7	Rubber	Non-ID Rubber	104.00	Waste

6. Components/materials which may disturb certain recycling processes

8



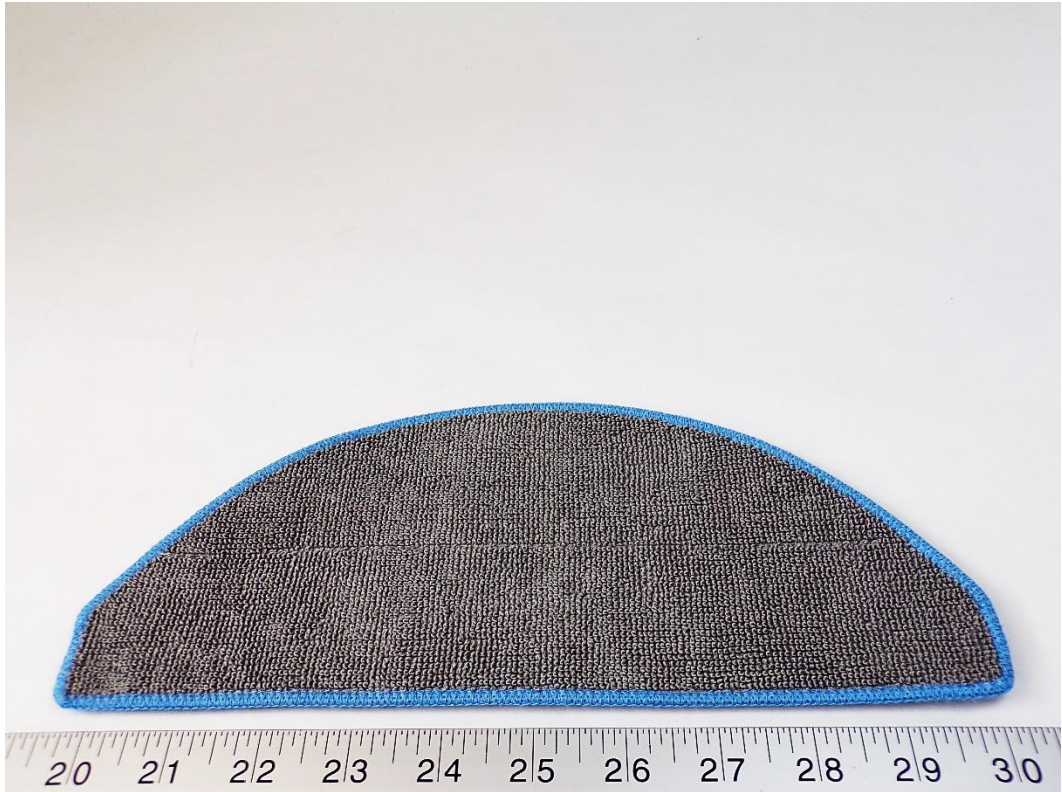
Recycling Information:

Nr.	Component	Material	Wt. (g)	Comments
8	Non-ID Textile Components	Non-ID Textile	1.93	Waste



6. Components/materials which may disturb certain recycling processes

9



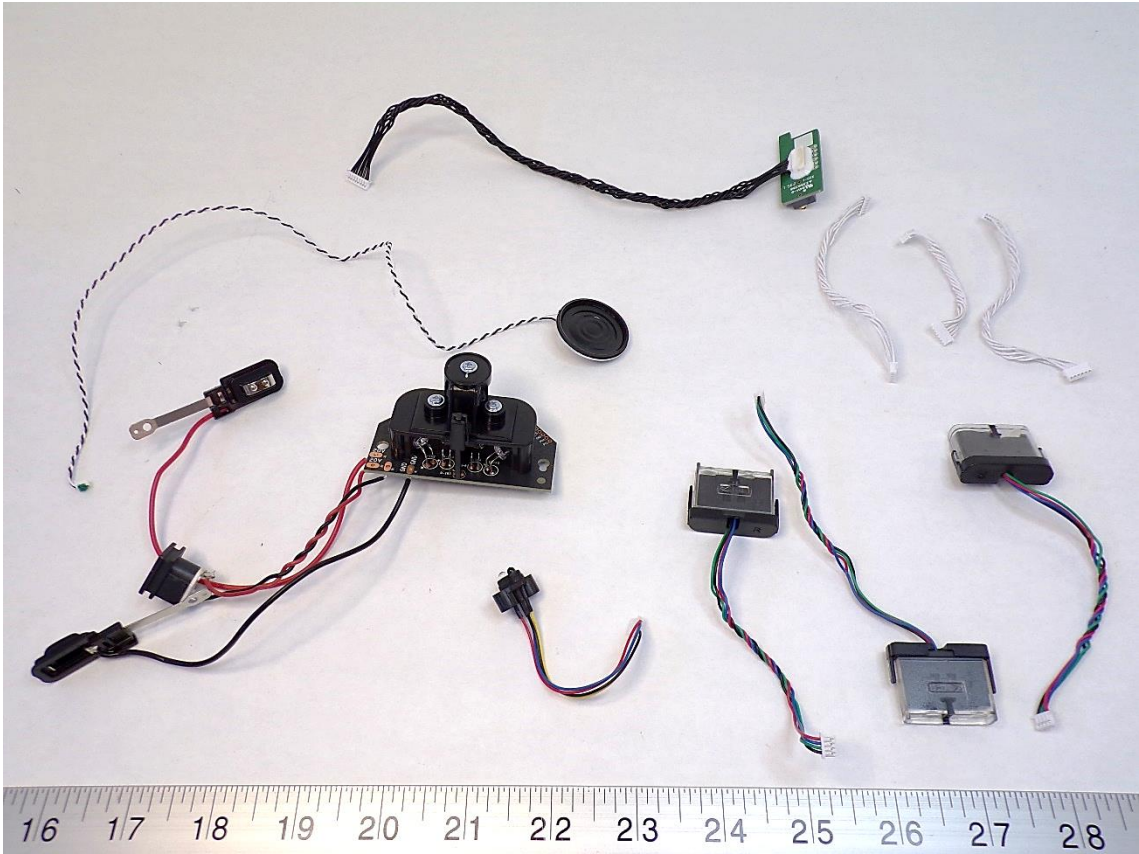
Recycling Information:

Nr.	Component	Material	Wt. (g)	Comments
9	Steam Mop Head	Non-ID Textile	16.11	Waste



7. Material/components which have an economic value at end-of-life.

1



Recycling Information:

Nr.	Component	Material	Wt. (g)	Comments
1	Reusable Cables	Mixed	62.96	Reuse



7. Material/components which have an economic value at end-of-life.

2



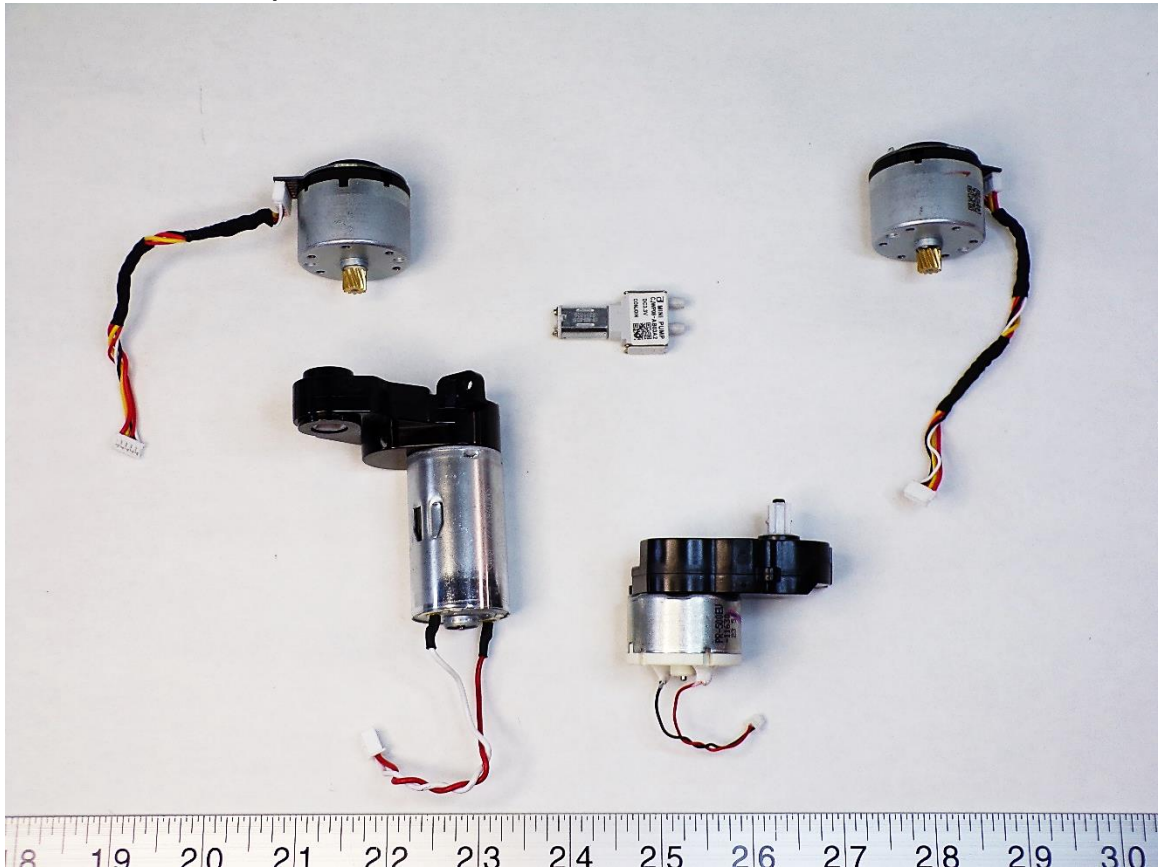
Recycling Information:

Nr.	Component	Material	Wt. (g)	Comments
2	Power Cord	Mixed	90.09	Reuse



7. Material/components which have an economic value at end-of-life.

3



Recycling Information:

Nr.	Component	Material	Wt. (g)	Comments
3	Reusable Motors	Mixed	318.39	Reuse



7. Material/components which have an economic value at end-of-life.

4



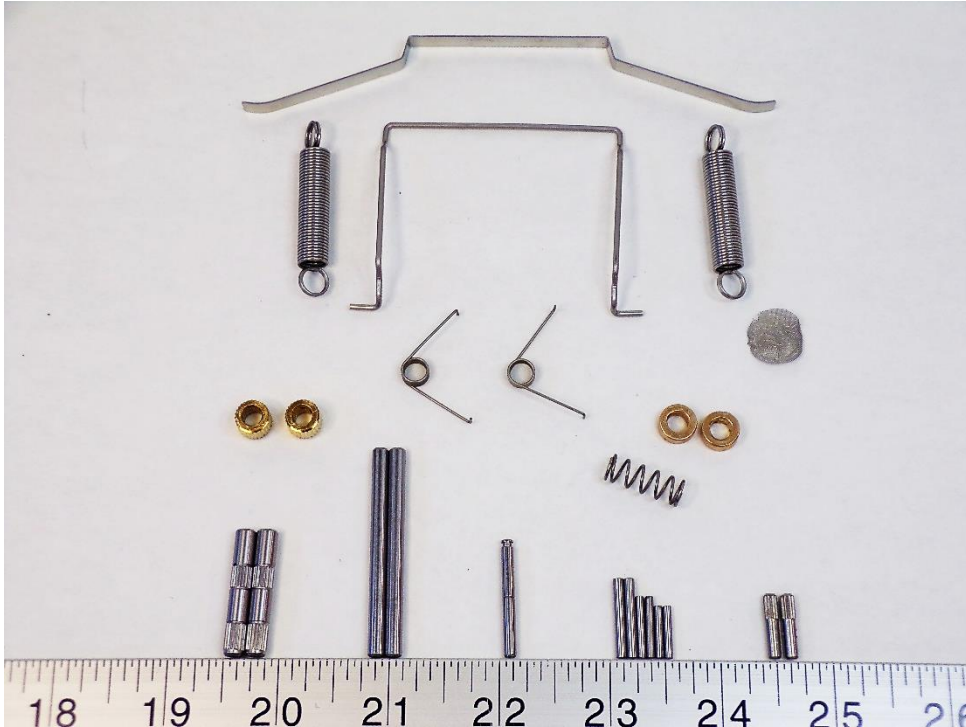
Recycling Information:

Nr.	Component	Material	Wt. (g)	Comments
4	Non-ID Metal	Alloy	368.36	Recycle



7. Material/components which have an economic value at end-of-life.

5

**Recycling Information:**

Nr.	Component	Material	Wt. (g)	Comments
5	Hardware	Alloy	43.18	Recycle



7. Material/components which have an economic value at end-of-life.

6



Recycling Information:

Nr.	Component	Material	Wt. (g)	Comments
6	Screws	Alloy	32.90	Recycle



7. Material/components which have an economic value at end-of-life.

7

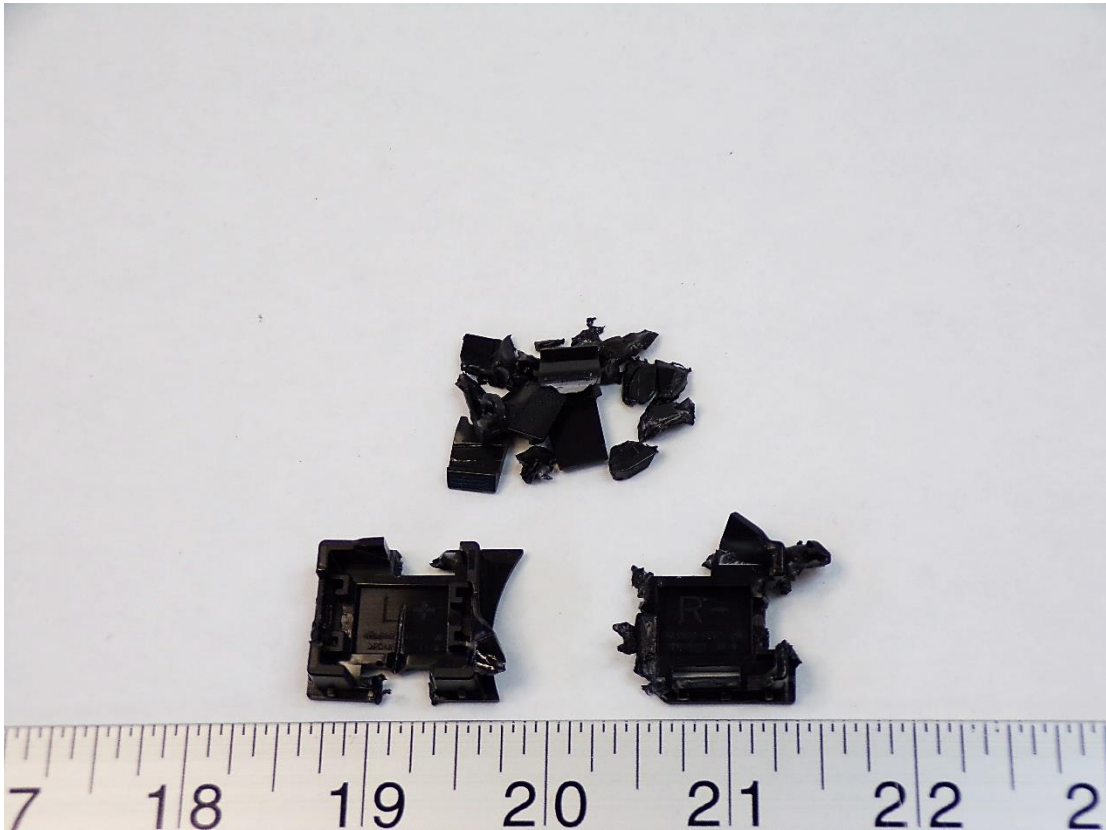
**Recycling Information:**

Nr.	Component	Material	Wt. (g)	Comments
7	Caster Wheel	Mixed	29.81	Reuse



7. Material/components which have an economic value at end-of-life.

8



Recycling Information:

Nr.	Component	Material	Wt. (g)	Comments
8	PC+ABS Plastic Components	PC+ABS	5.19	Recycle

9

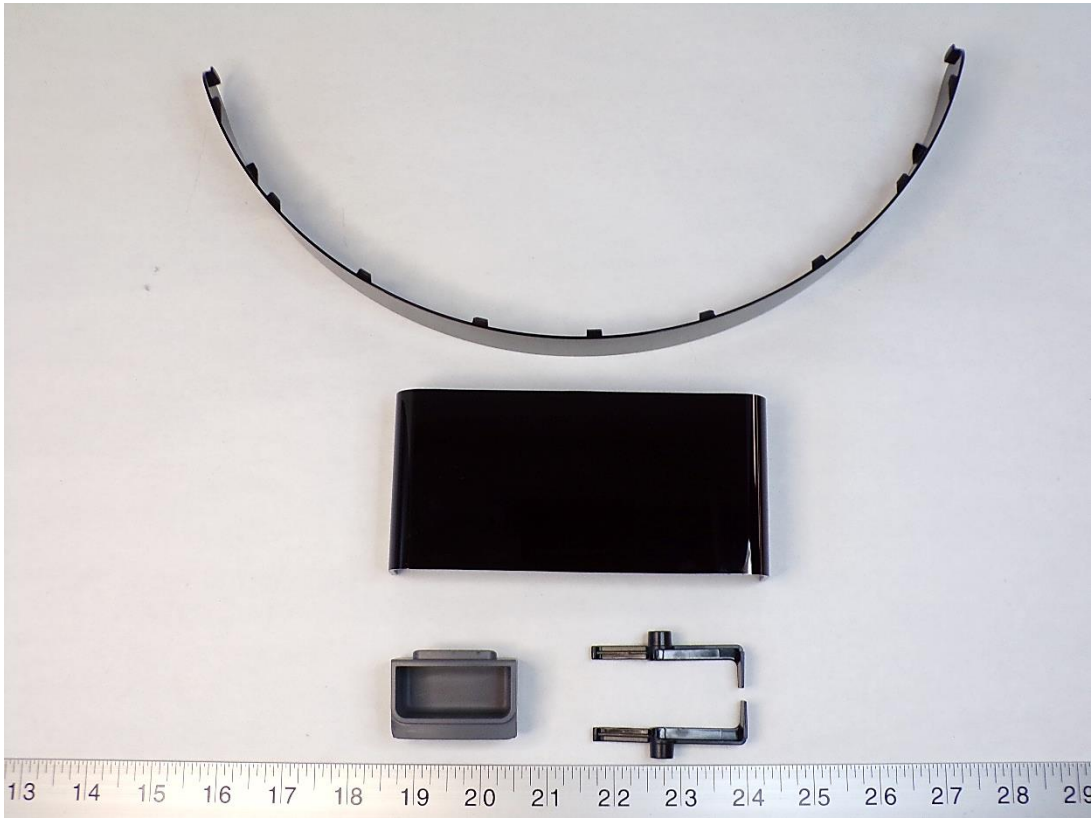


Nr.	Component	Material	Wt. (g)	Comments
9	ABS Plastic Components	ABS	1088.62	Recycle



7. Material/components which have an economic value at end-of-life.

10



Recycling Information:

Nr.	Component	Material	Wt. (g)	Comments
10	PC Plastic Components	PC	64.49	Recycle

8. Recycling Information Summary:

Nr.	Component	Material	Wt. (g)	Comments
1	PCB / Mixed Components	PCB	68.49	Treat Separately, 50% Recycle
2	Battery	Mixed	233.15	Treat Separately < Refer To Batteries Directive (2006/66/EC)>
3	Dust cleaner	Mixed	5.21	Treat Separately, 40% Recycle
4	Clip	Mixed	1.69	Treat Separately, 30% Recycle
5	Large Brush	Mixed	43.44	Treat Separately, 30% Recycle
6	Non-Reusable Cable	Mixed	27.22	Treat Separately, 50% Recycle

Nr.	Component	Material	Wt. (g)	Comments
1	Misc. Non-ID Plastic components	Non-ID Plastic	347.54	Incinerate
2	Foam	Non-ID Foam	0.39	Waste
3	Misc. Foam/Plastic Washer	Mixed	1.55	Waste
4	Filter	Mixed	5.70	Waste
5	Rubber with Buttons	Mixed	13.59	Waste
6	Labels	Non-ID Plastic	2.73	Incinerate
7	Rubber	Non-ID Rubber	104.00	Waste

8. Recycling Information Summary:

Nr.	Component	Material	Wt. (g)	Comments
8	Non-ID Textile Components	Non-ID Textile	1.93	Waste
9	Steam Mop Head	Non-ID Textile	16.11	Waste
Nr.	Component	Material	Wt. (g)	Comments
1	Reusable Cables	Mixed	62.96	Reuse
2	Power Cord	Mixed	90.09	Reuse
3	Reusable Motors	Mixed	318.39	Reuse
4	Non-ID Metal	Alloy	368.36	Recycle
5	Hardware	Alloy	43.18	Recycle
6	Screws	Alloy	32.90	Recycle
7	Caster Wheel	Mixed	29.81	Reuse
8	PC+ABS Plastic Components	PC+ABS	5.19	Recycle
9	ABS Plastic Components	ABS	1088.62	Recycle
10	PC Plastic Components	PC	64.49	Recycle

Special notes:

Some other components can be recycled.
Please refer to the WEEE summary report.
All images for representative purposes only.