


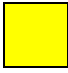

1. Manufacturer Information

Manufacturer:	iRobot Corporation
Address:	8 Crosby Drive, Bedford, MA 01730 USA
Website:	www.iRobot.com
File Number:	315G3544.001



2. Product Information

Model Identification	Braava 390t
Product Description	Braava 3xy Series Floor Mopping Robot
Type Designation(s):	Braava 3xy Series Floor Mopping Robot
WEEE Category:	Category 1 (Large household appliances)
Weight [g]:	2509g
Recyclability:	79.85%

	Type I	Material/components which must be removed and treated separately According to Annex II of the 2012/19/EU (WEEE) directive.
	Type II	Material/components which can disturb certain recycling processes.
	Type III	Material/components which have an economic value at end-of-life.

3. Recycling Information: (Optional)

- Are plastic parts >10g marked according to ISO 11469?
- Is the product manufactured of 20% recycled material?

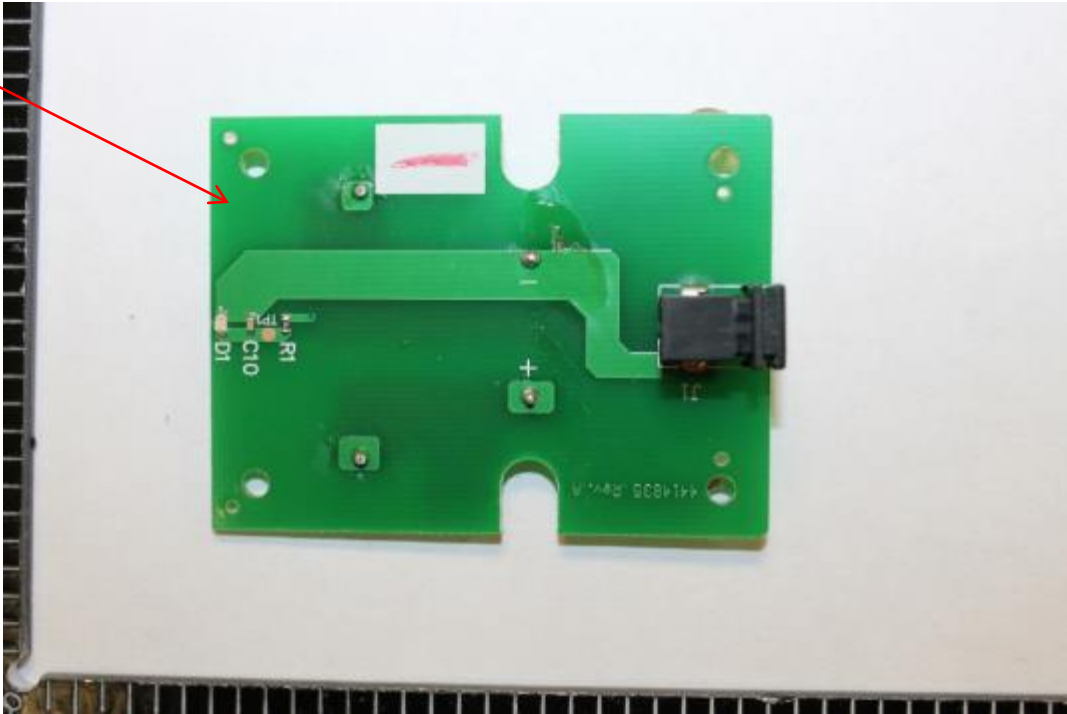
4. Directives and Standards: (Optional)

The following directives and standards have been considered:

- EN 50419:2006 - "Marking of electrical and electronic equipment in accordance with Article 11(2) of Directive 2012/19/EU (WEEE)
- 2012/19/EU - Directive 2012/19/EU of the European Parliament and of the Council of July 4, 2012 on waste of electrical and electronic equipment (WEEE)
- ISO 11469 - "Generic Identification and Marking of Plastic Products"



5. Instructions for removing materials/components which must be removed and treated separately:

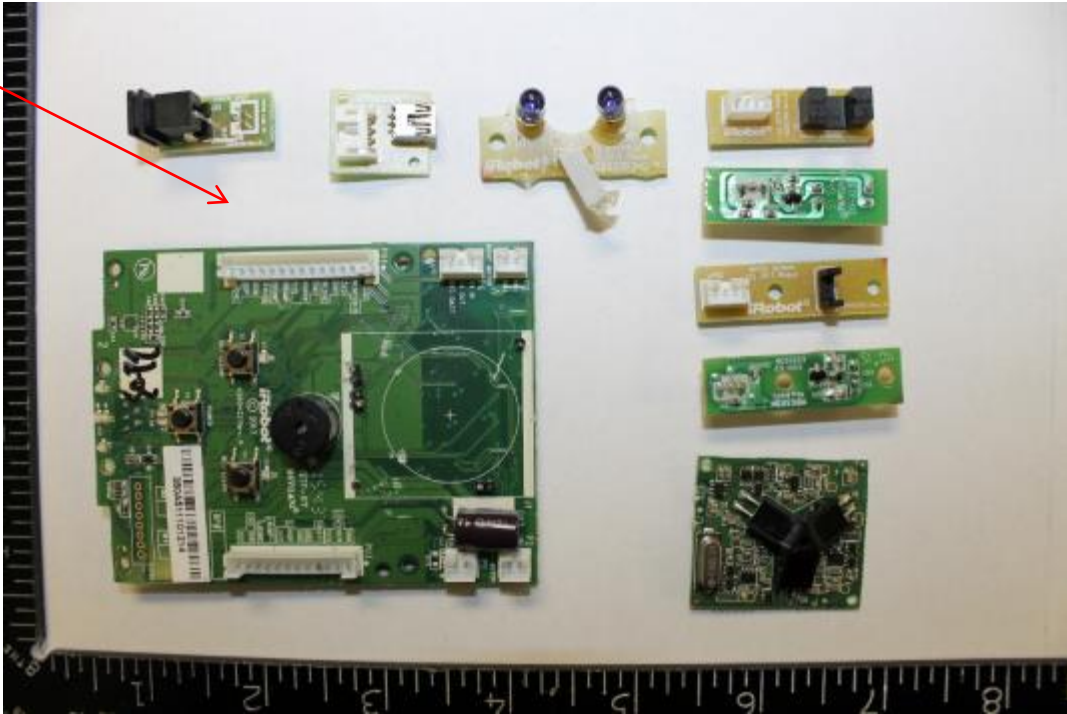


Recycling Information:

Nr.	Component	Material	Wt. (g)	Comments
1	Turbo Cradle PCB	PCB	11	Treat Separately, 50% Recycle



5. Instructions for removing materials/components which must be removed and treated separately:

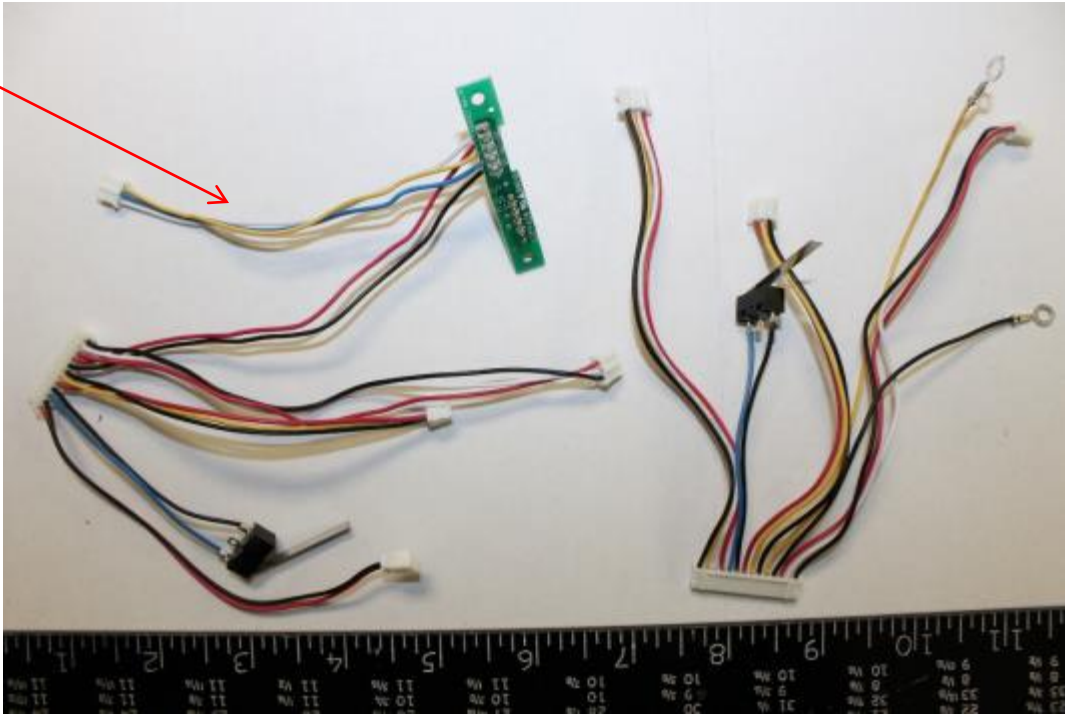


Recycling Information:

Nr.	Component	Material	Wt. (g)	Comments
2	Braava	PCB	49	Treat Separately, 50% Recycle



5. Instructions for removing materials/components which must be removed and treated separately:

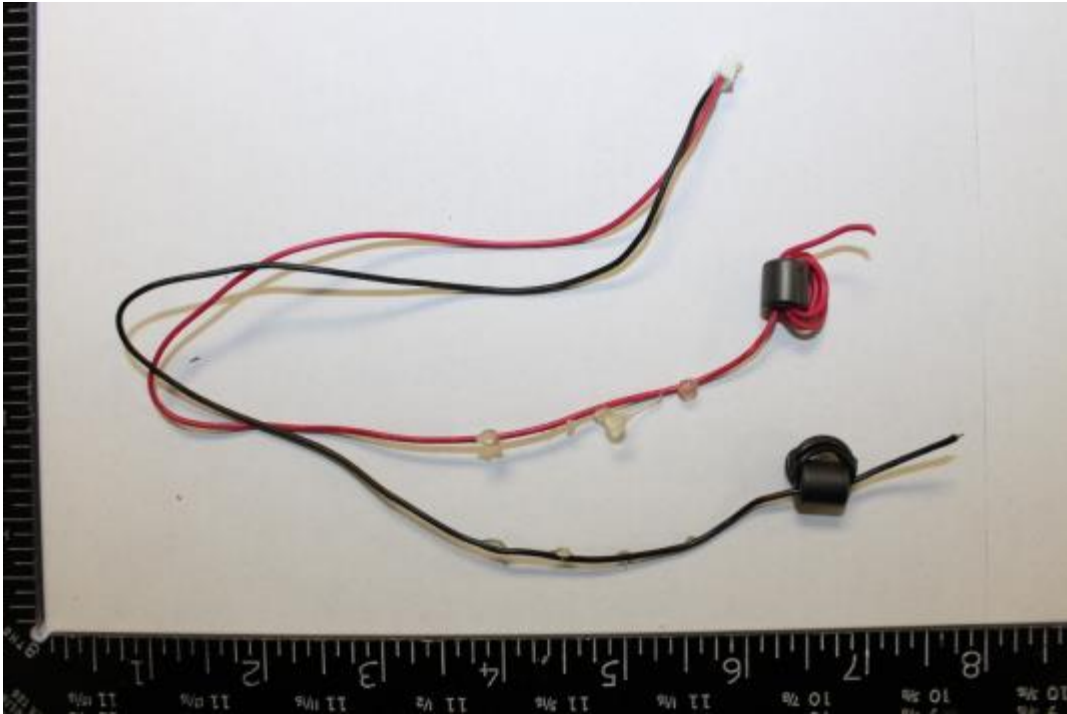


Recycling Information:

Nr.	Component	Material	Wt. (g)	Comments
3	Braava PCB Cable	Non-Reusable Cable	18	Treat Separately, 40% Recycle, 60 Incinerate



5. Instructions for removing materials/components which must be removed and treated separately:

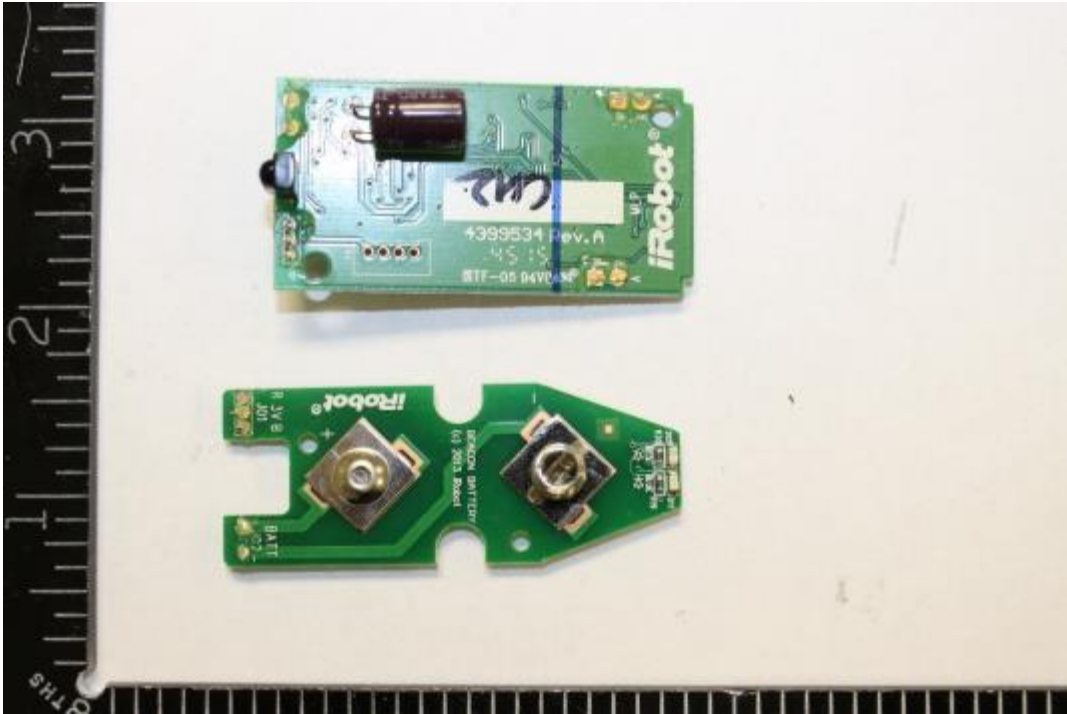


Recycling Information:

Nr.	Component	Material	Wt. (g)	Comments
4	Interior Charge Cables	Non-Reusable Cable	8	Treat Separately, 40% Recycle, 60 Incinerate



5. Instructions for removing materials/components which must be removed and treated separately:

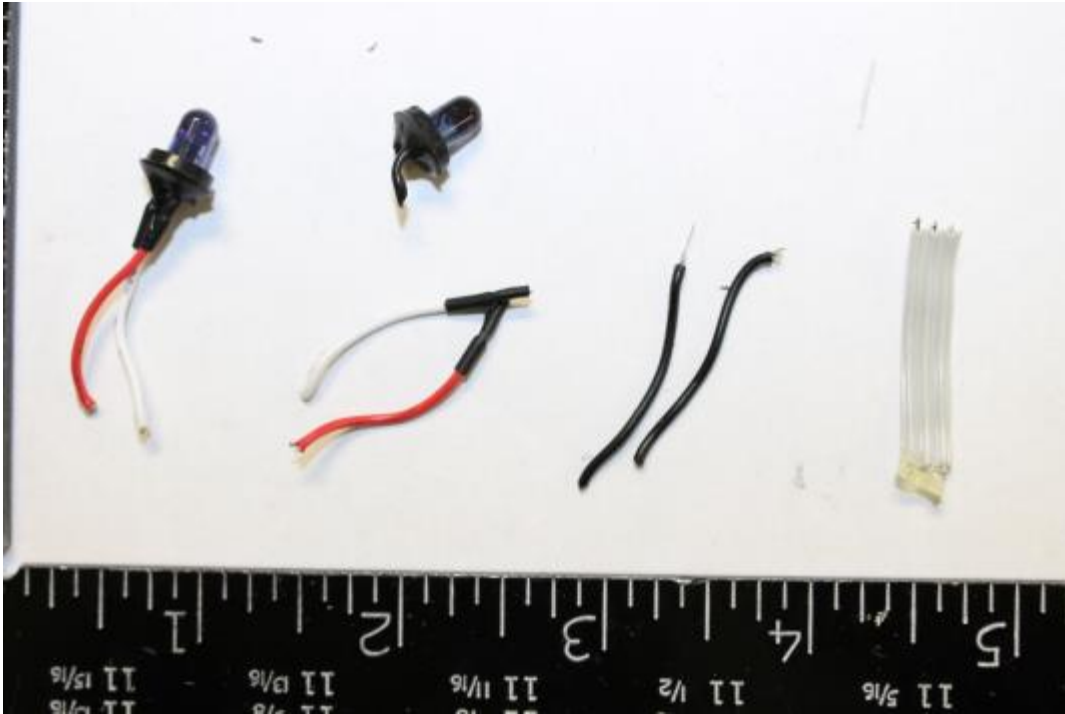


Recycling Information:

Nr.	Component	Material	Wt. (g)	Comments
5	Cube PCBs	PCB	13	Treat Separately, 50% Recycle



5. Instructions for removing materials/components which must be removed and treated separately:



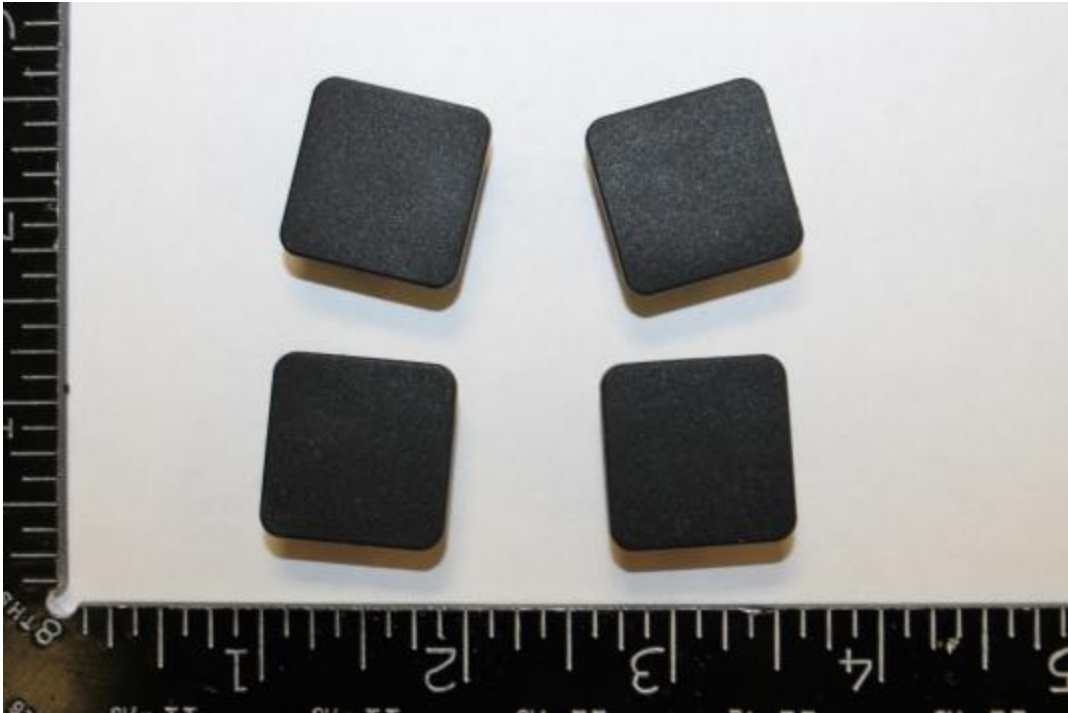
Recycling Information:

Nr.	Component	Material	Wt. (g)	Comments
6	Cube Cables	Non-Reusable Cable	2	Treat Separately, 40% Recycle, 60 Incinerate



6. Components/materials which may disturb certain recycling processes

1

**Recycling Information:**

Nr.	Component	Material	Wt. (g)	Comments
1	Turbo Cradle Rubber Feet	Non-ID Rubber	7	Incinerate

6. Components/materials which may disturb certain recycling processes

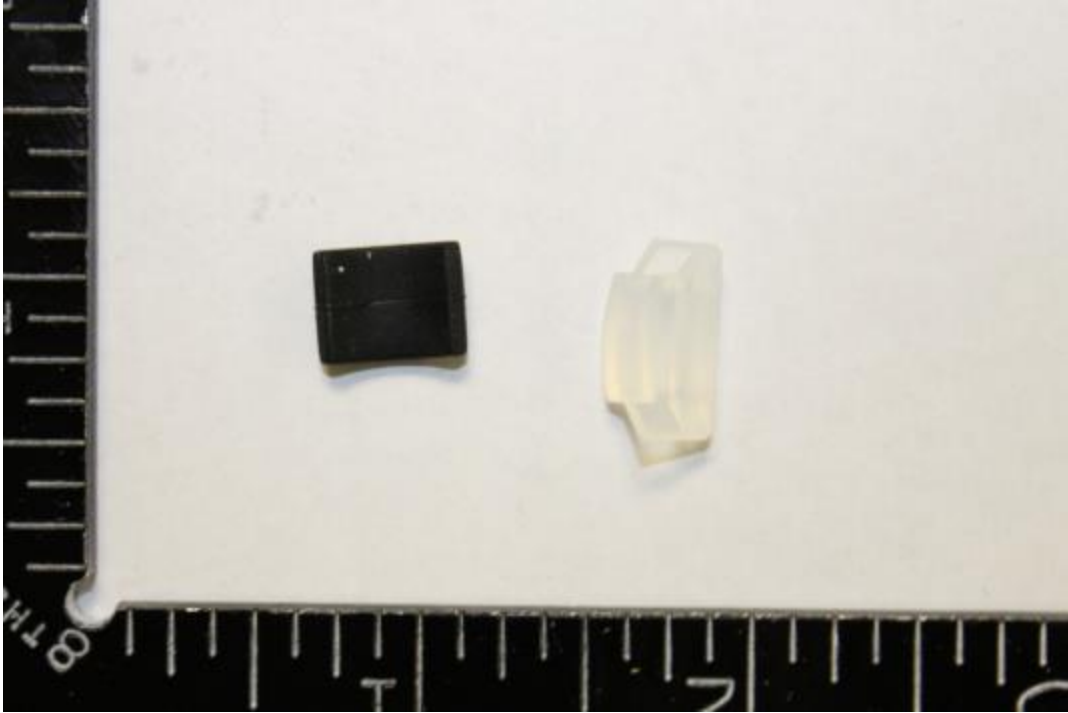


Recycling Information:

Nr.	Component	Material	Wt. (g)	Comments
2	Braava Rubber Pieces	Non-ID Rubber	36	Incinerate
3	Zip Ties	Non-ID Plastic	1	Waste

6. Components/materials which may disturb certain recycling processes

4

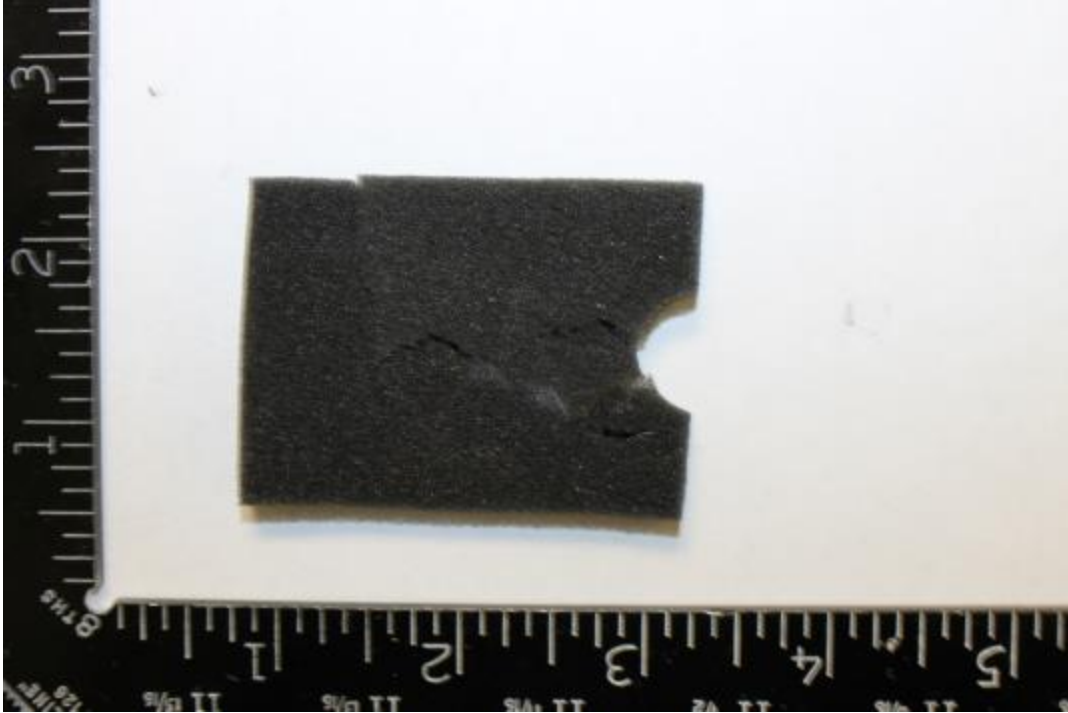


Recycling Information:

Nr.	Component	Material	Wt. (g)	Comments
4	Cube Rubber Pieces	Non-ID Rubber	1	Incinerate

6. Components/materials which may disturb certain recycling processes

5



Recycling Information:

Nr.	Component	Material	Wt. (g)	Comments
5	Battery Door Foam	Non-ID Foam	1	Waste

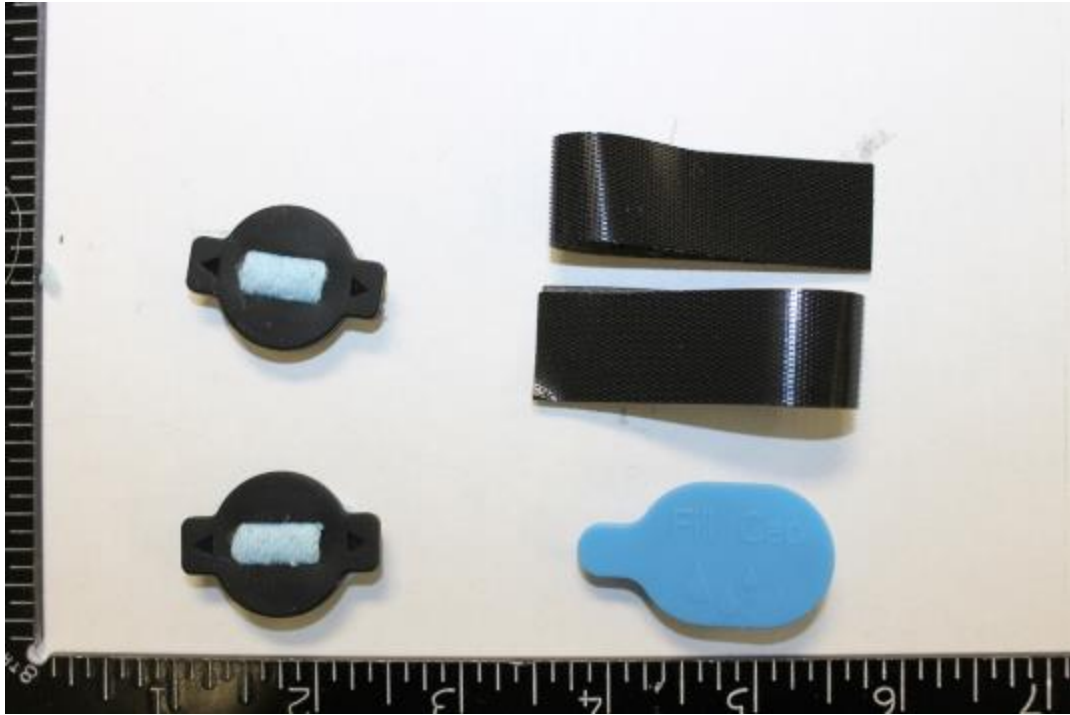
 6. Components/materials which may disturb certain recycling processes

 6
**Recycling Information:**

Nr.	Component	Material	Wt. (g)	Comments
6	Wet and Dry Mod towels qty 2 each	Non-ID Plastic	93	Waste

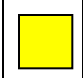
6. Components/materials which may disturb certain recycling processes

7



Recycling Information:

Nr.	Component	Material	Wt. (g)	Comments
7	Replacement Wick, container cap, and Velcro	Non-ID Plastic	9	Waste

 6. Components/materials which may disturb certain recycling processes

 8
**Recycling Information:**

Nr.	Component	Material	Wt. (g)	Comments
8	Wet Mop with Foam	Non-ID Plastic	121	Waste

6. Components/materials which may disturb certain recycling processes

9



Recycling Information:

Nr.	Component	Material	Wt. (g)	Comments
9	Dry Mop	Non-ID Plastic	147	Waste

6 6. Components/materials which may disturb certain recycling processes

10
**Recycling Information:**

Nr.	Component	Material	Wt. (g)	Comments
10	Dry Mop Blue Strips	Non-ID Rubber	37	Incinerate



7. Material/components which have an economic value at end-of-life.

1



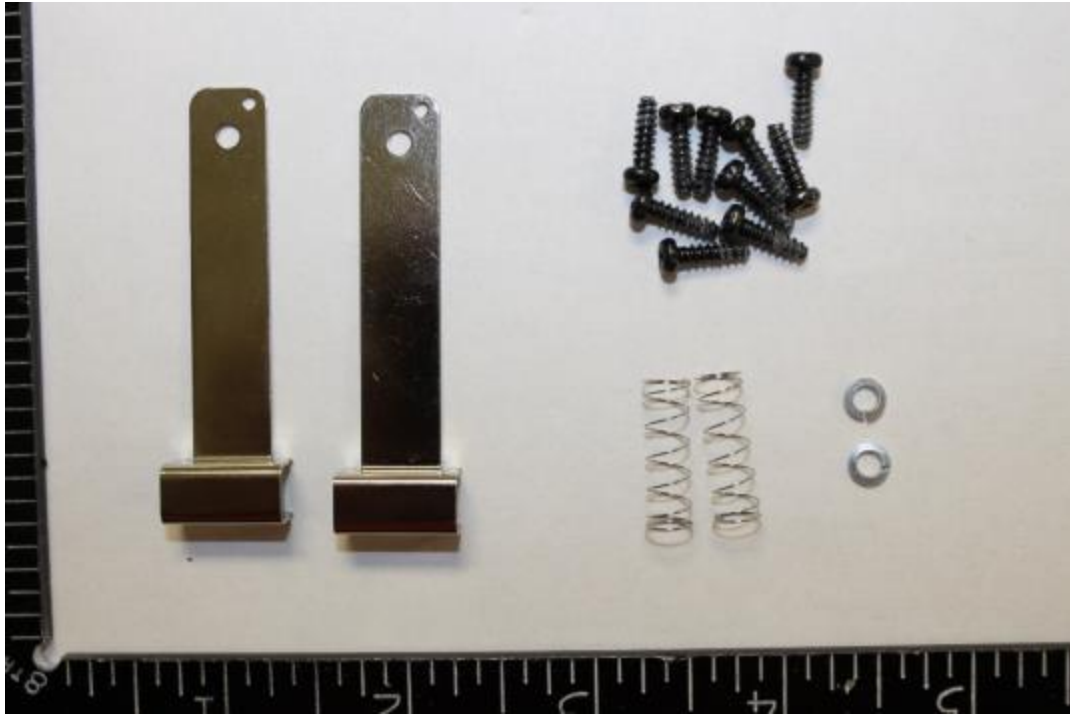
Recycling Information:

Nr.	Component	Material	Wt. (g)	Comments
1	Turbo Cradle External casing and Misc. Snaps	ABS	197	Recycle



7. Material/components which have an economic value at end-of-life.

2



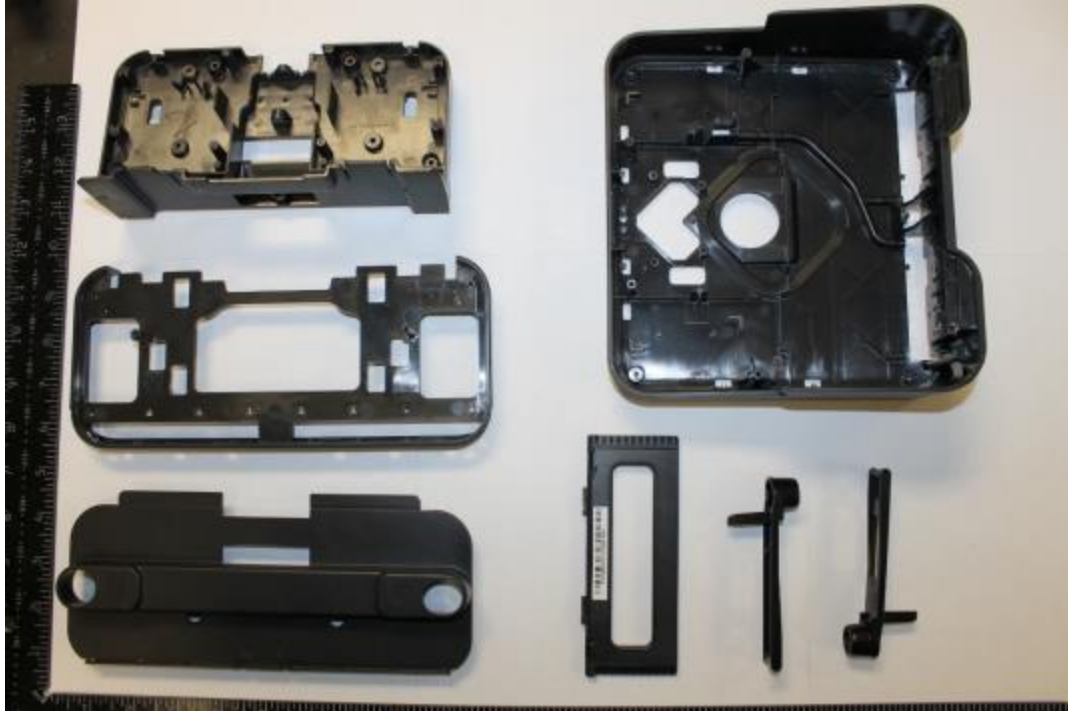
Recycling Information:

Nr.	Component	Material	Wt. (g)	Comments
2	Turbo Cradle Springs Plates and Screws	Steel	14	Recycle



7. Material/components which have an economic value at end-of-life.

3



Recycling Information:

Nr.	Component	Material	Wt. (g)	Comments
3	Braava External casing	ABS	396	Recycle



7. Material/components which have an economic value at end-of-life.

4



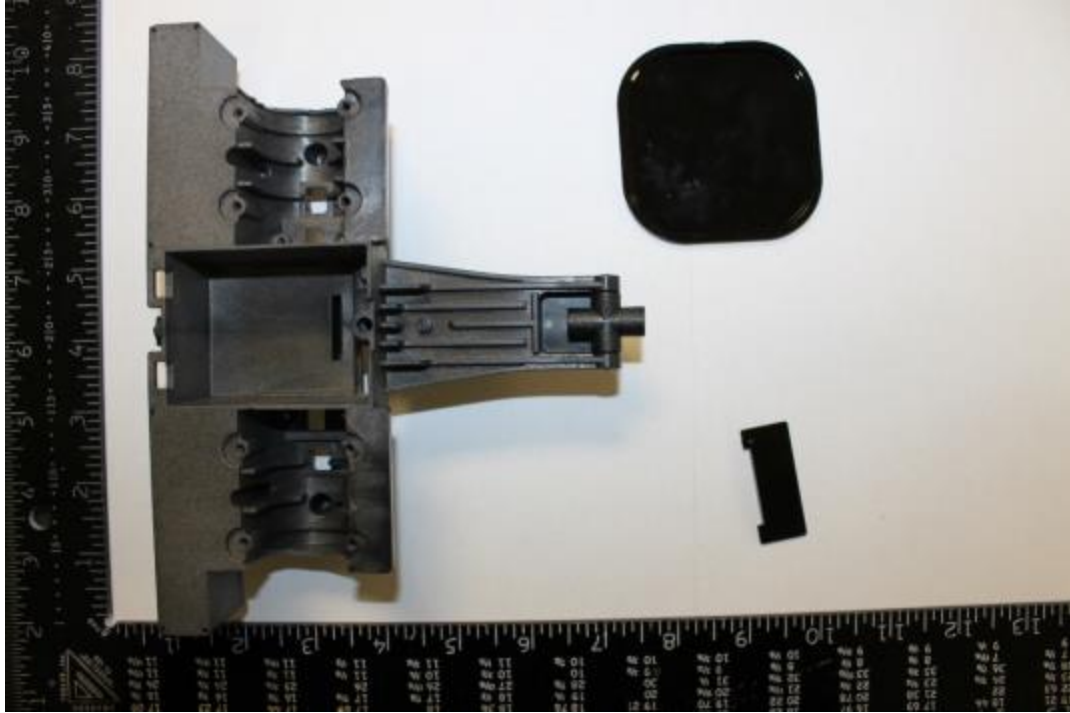
Recycling Information:

Nr.	Component	Material	Wt. (g)	Comments
4	Braava Internal Plates	ABS	54	Recycle



7. Material/components which have an economic value at end-of-life.

5



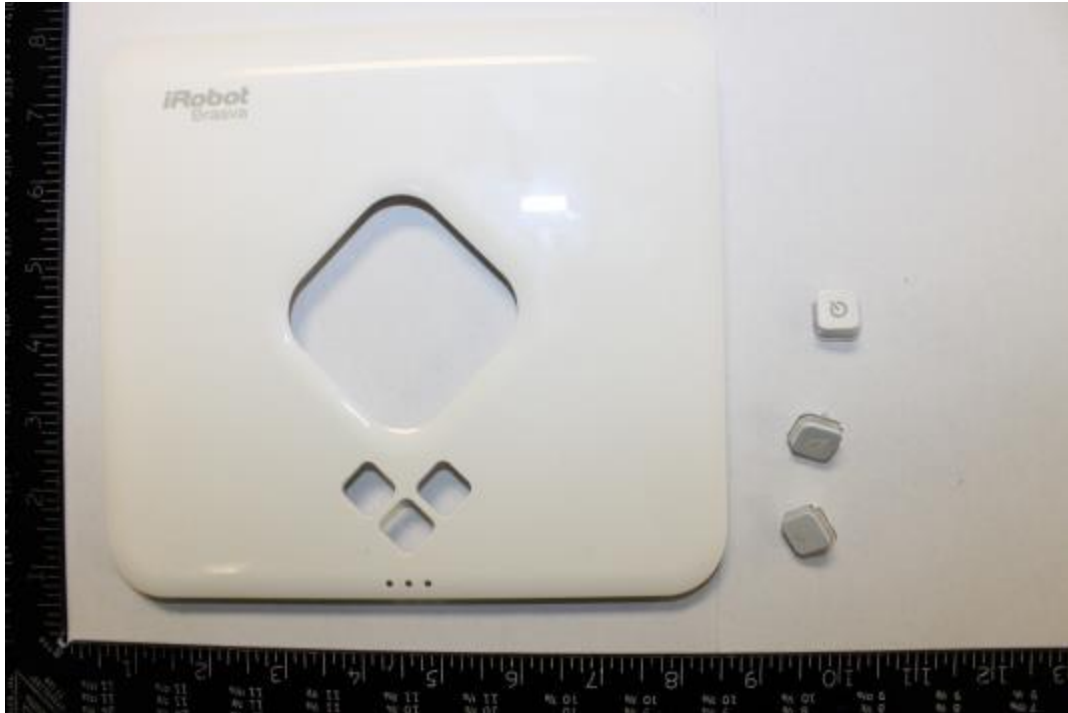
Recycling Information:

Nr.	Component	Material	Wt. (g)	Comments
5	Braava Wheel Support and Top Lens Windows	ABS	139	Recycle



7. Material/components which have an economic value at end-of-life.

6



Recycling Information:

Nr.	Component	Material	Wt. (g)	Comments
6	White Braava Cover	ABS	116	Recycle



7. Material/components which have an economic value at end-of-life.

7



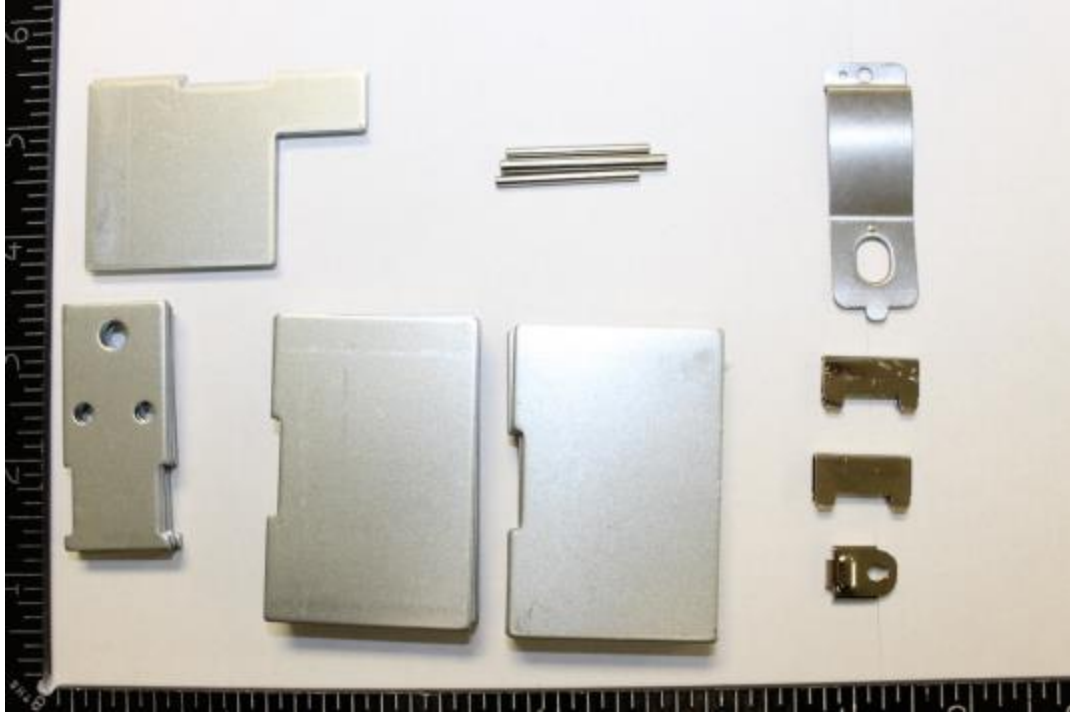
Recycling Information:

Nr.	Component	Material	Wt. (g)	Comments
7	Wheel Motors	Mixed	138	Reuse



7. Material/components which have an economic value at end-of-life.

8



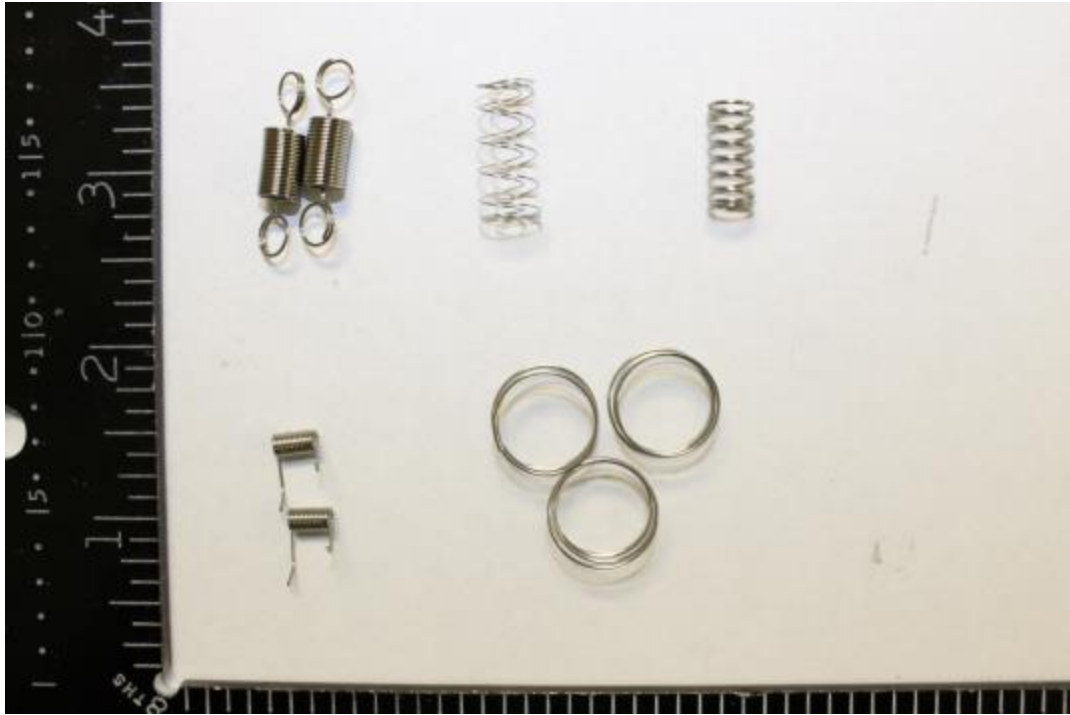
Recycling Information:

Nr.	Component	Material	Wt. (g)	Comments
8	Metal Weights	Steel	658	Recycle



7. Material/components which have an economic value at end-of-life.

9



Recycling Information:

Nr.	Component	Material	Wt. (g)	Comments
9	Springs	Steel	4	Recycle



7. Material/components which have an economic value at end-of-life.

10



Recycling Information:

Nr.	Component	Material	Wt. (g)	Comments
10	Washers and screws	Steel	50	Recycle



7. Material/components which have an economic value at end-of-life.

11



Recycling Information:

Nr.	Component	Material	Wt. (g)	Comments
11	Cube Casing	ABS	95	Recycle



7. Material/components which have an economic value at end-of-life.

12

**Recycling Information:**

Nr.	Component	Material	Wt. (g)	Comments
12	Cube Battery plug and screws	Steel	4	Recycle



7. Material/components which have an economic value at end-of-life.



Recycling Information:

Nr.	Component	Material	Wt. (g)	Comments
13	EU Power Cord	Mixed	90	Reuse

8. Recycling Information Summary:

Nr.	Component	Material	Wt. (g)	Comments
1	PCB / Mixed Components	PCB	11	TREAT SEPARATELY, 50% RECYCLE
2	Braava	PCB	49	Treat Separately, 50% Recycle
3	Braava PCB Cable	Non-Reusable Cable	18	Treat Separately, 40% Recycle, 60 Incinerate
4	Interior Charge Cables	Non-Reusable Cable	8	Treat Separately, 40% Recycle, 60 Incinerate
5	Cube PCBs	PCB	13	Treat Separately, 50% Recycle
6	Cube Cables	Non-Reusable Cable	2	Treat Separately, 40% Recycle, 60 Incinerate
Nr.	Component	Material	Wt. (g)	Comments
1	Turbo Cradle Rubber Feet	Non-ID Rubber	7	Incinerate
2	Braava Rubber Pieces	Non-ID Rubber	36	Incinerate
3	Zip Ties	Non-ID Plastic	1	Waste
4	Cube Rubber Pieces	Non-ID Rubber	1	Incinerate
5	Battery Door Foam	Non-ID Foam	1	Waste
6	Wet and Dry Mod towels qty 2 each	Non-ID Plastic	93	Waste
7	Replacement Wick, container cap, and Velcro	Non-ID Plastic	9	Waste
8	Wet Mop with Foam	Non-ID Plastic	121	Waste
9	Dry Mop	Non-ID Plastic	147	Waste
10	Dry Mop Blue Strips	Non-ID Rubber	37	Incinerate

8. Recycling Information Summary:

Nr.	Component	Material	Wt. (g)	Comments
1	Turbo Cradle External casing and Misc. Snaps	ABS	197	Recycle
2	Turbo Cradle Springs Plates and Screws	Steel	14	Recycle
3	Braava External casing	ABS	396	Recycle
4	Braava Internal Plates	ABS	54	Recycle
5	Braava Wheel Support and Top Cover	ABS	139	Recycle
6	White Braava Cover	ABS	116	Recycle
7	Wheel Motors	Mixed	138	Reuse
8	Metal Weights	Steel	658	Recycle
9	Springs	Steel	4	Recycle
10	Washers and screws	Steel	50	Recycle
11	Cube Casing	ABS	95	Recycle
12	Cube Battery plug and screws	Steel	4	Recycle
13	EU Power Cord	Mixed	90	Reuse

Special notes:

Some other components can be recycled.
Please refer to the WEEE summary report.
All images for representative purposes only.