

## 1. Manufacturer Information


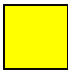

Manufacturer:	iRobot Corporation
Address:	8 Crosby Drive, Bedford, MA 01730 USA
Website:	<a href="http://www.iRobot.com">www.iRobot.com</a>
File Number:	318G4105.001R



## 2. Product Information

Model Identification	RVB-Y1, RVB-Y2
Product Description	Roomba i7
Type Designation(s):	Robotic Vacuum
WEEE Category:	Category 5 (Small Equipment)
Weight [g]:	3847.5 g
Recyclability:	60.37%



	<b>Type I</b>	<b>Material/components which must be removed and treated separately According to Annex II of the 2012/19/EU (WEEE) directive.</b>
	<b>Type II</b>	<b>Material/components which can disturb certain recycling processes.</b>
	<b>Type III</b>	<b>Material/components which have an economic value at end-of-life.</b>

### 3. Recycling Information: (Optional)

- Are plastic parts >10g marked according to ISO 11469?
- Is the product manufactured of 20% recycled material?

### 4. Directives and Standards: (Optional)

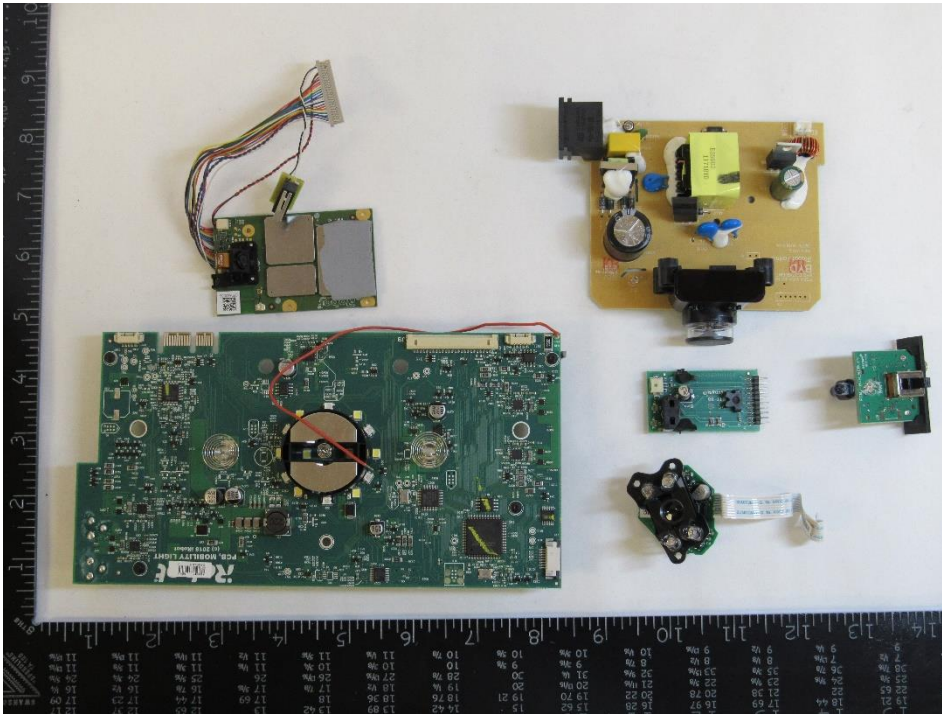
The following directives and standards have been considered:

- EN 50419:2006 - "Marking of electrical and electronic equipment in accordance with Article 11(2) of Directive 2012/19/EU (WEEE)
- 2012/19/EU - Directive 2012/19/EU of the European Parliament and of the Council of July 4, 2012 on waste of electrical and electronic equipment (WEEE)
- ISO 11469 - "Generic Identification and Marking of Plastic Products"





## 5. Instructions for removing materials/components which must be removed and treated separately:



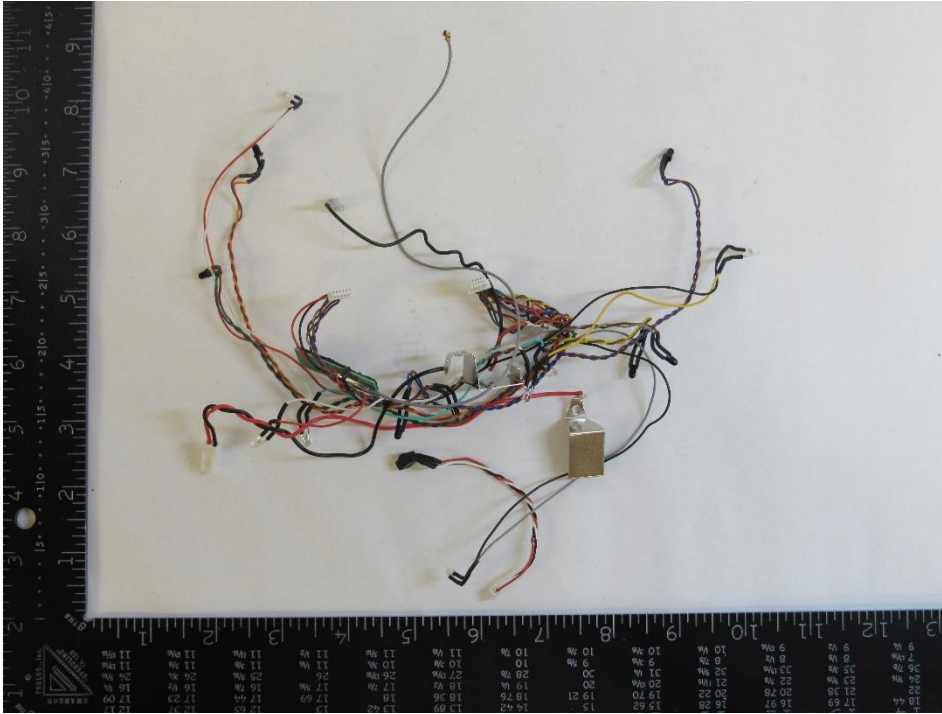
### Recycling Information:

Nr.	Component	Material	Wt. (g)	Comments
1	PCBs	Mixed	226.6	Treat Separately, 50% Recycle





## 5. Instructions for removing materials/components which must be removed and treated separately:



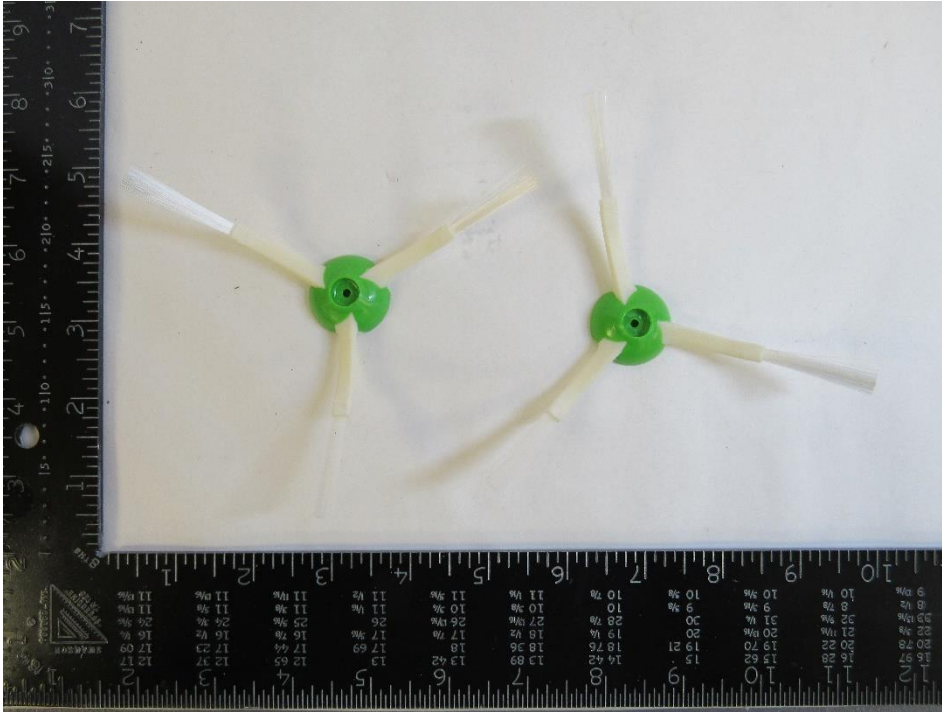
### Recycling Information:

Nr.	Component	Material	Wt. (g)	Comments
2	Non-Reusable Cables	Mixed	25.9	Treat Separately, 40% Recycle





5. Instructions for removing materials/components which must be removed and treated separately:



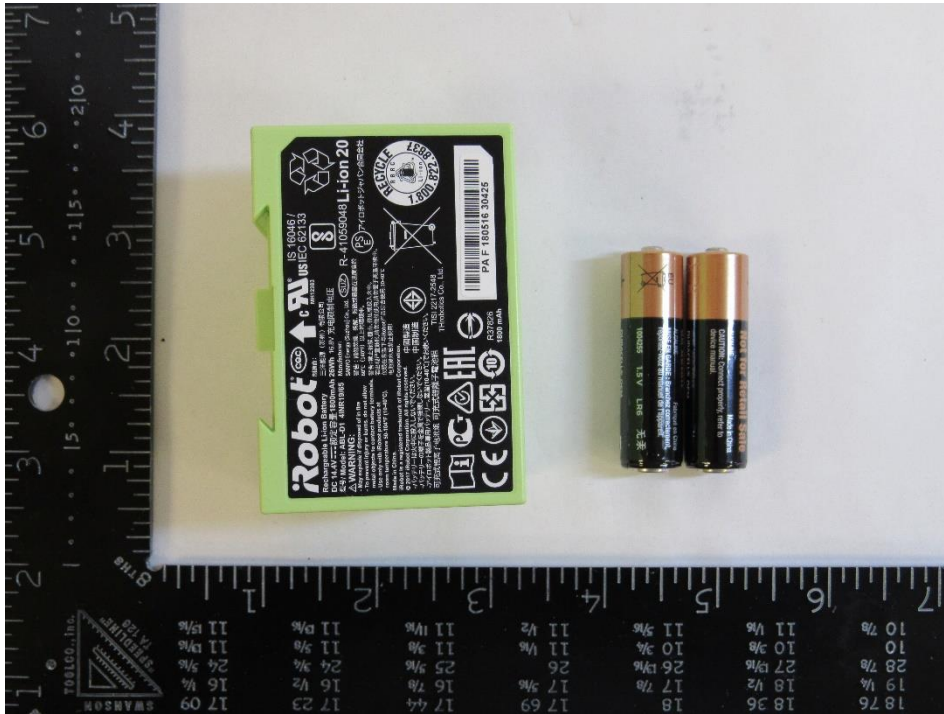
**Recycling Information:**

Nr.	Component	Material	Wt. (g)	Comments
3	Corner Brushes	Mixed	11.4	Treat Separately, 50% Recycle





## 5. Instructions for removing materials/components which must be removed and treated separately:



### Recycling Information:

Nr.	Component	Material	Wt. (g)	Comments
4	Batteries	Mixed	280.7	Treat Separately, Refer to Batteries Directive (2006/66/EC)





## 5. Instructions for removing materials/components which must be removed and treated separately:



### Recycling Information:

Nr.	Component	Material	Wt. (g)	Comments
5	Large Brushes	Mixed	78.2	Treat Separately, 30% Recycle



## 1



Nr.	Component	Material	Wt. (g)	Comments
1	Misc. Rubber Parts	Non-ID Rubber	42.1	Waste



6. Components/materials which may disturb certain recycling processes

2



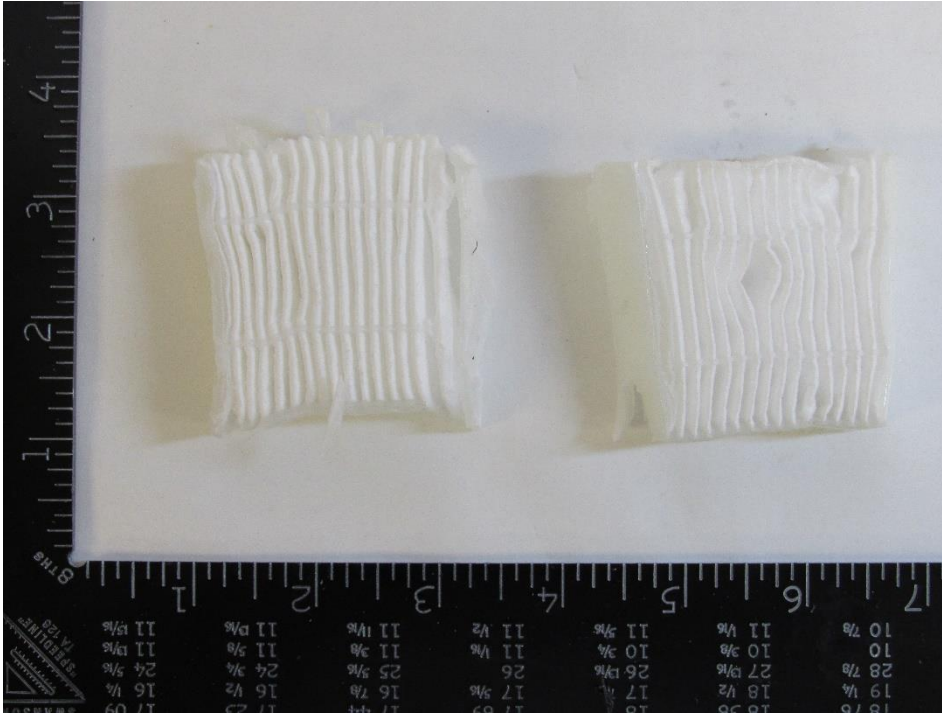
**Recycling Information:**

Nr.	Component	Material	Wt. (g)	Comments
2	Foam	Non-ID Foam	0.3	Waste



6. Components/materials which may disturb certain recycling processes

3



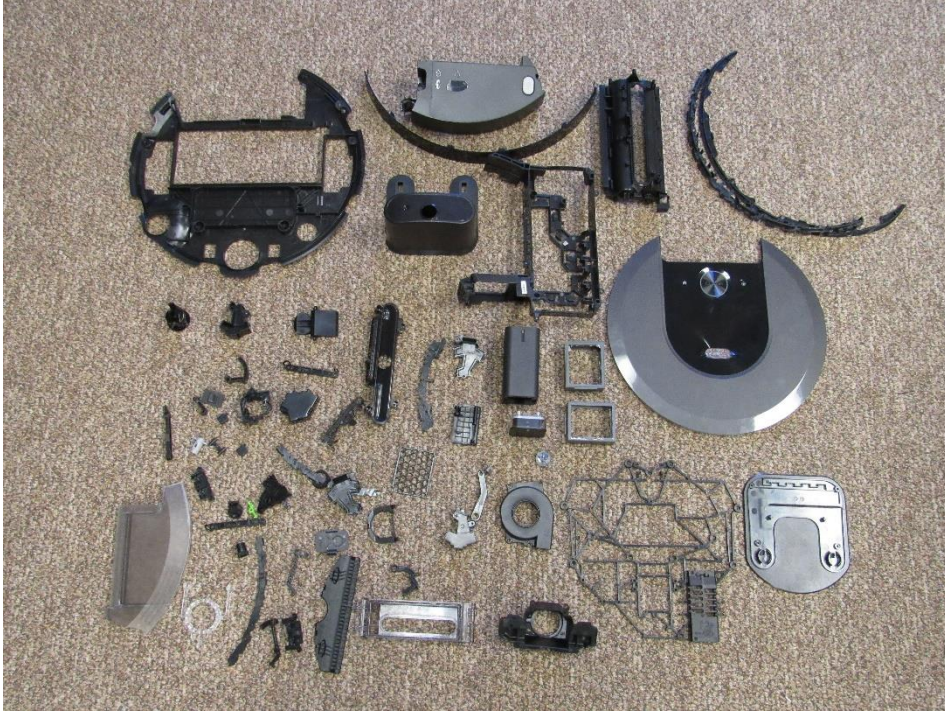
**Recycling Information:**

Nr.	Component	Material	Wt. (g)	Comments
3	Filter Textile	Non-ID Textile	17.0	Waste



6. Components/materials which may disturb certain recycling processes

4



**Recycling Information:**

Nr.	Component	Material	Wt. (g)	Comments
4	Misc. Plastic Parts	Non-ID Plastic	1165.0	Incinerate





## 7. Material/components which have an economic value at end-of-life.

1



### Recycling Information:

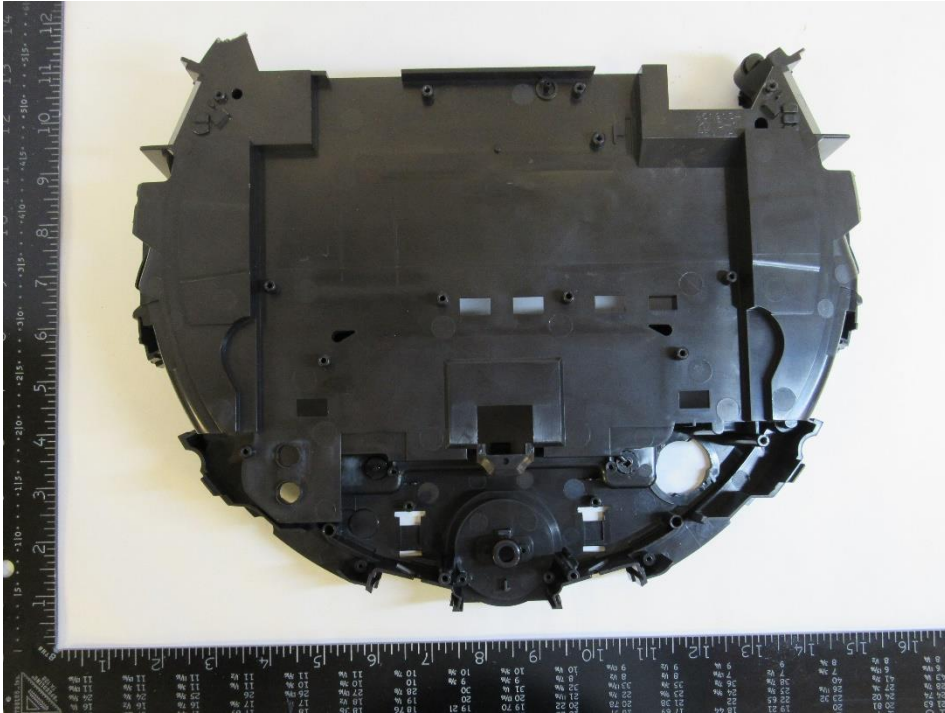
Nr.	Component	Material	Wt. (g)	Comments
1	Unit Top Cover	ABS	366.2	Recycle





## 7. Material/components which have an economic value at end-of-life.

2



### Recycling Information:

Nr.	Component	Material	Wt. (g)	Comments
2	Chassis	ABS	461.5	Recycle





## 7. Material/components which have an economic value at end-of-life.

3



### Recycling Information:

Nr.	Component	Material	Wt. (g)	Comments
3	Bumper	ABS	113.0	Recycle





## 7. Material/components which have an economic value at end-of-life.

4



### Recycling Information:

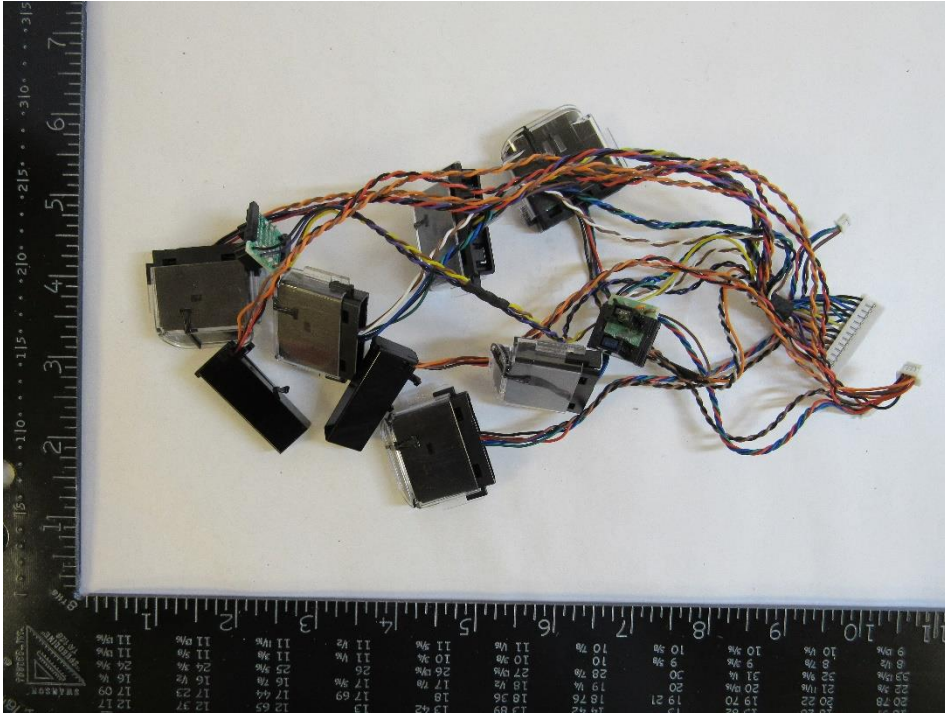
Nr.	Component	Material	Wt. (g)	Comments
4	Hardware	Alloy	57.6	Recycle





## 7. Material/components which have an economic value at end-of-life.

5



### Recycling Information:

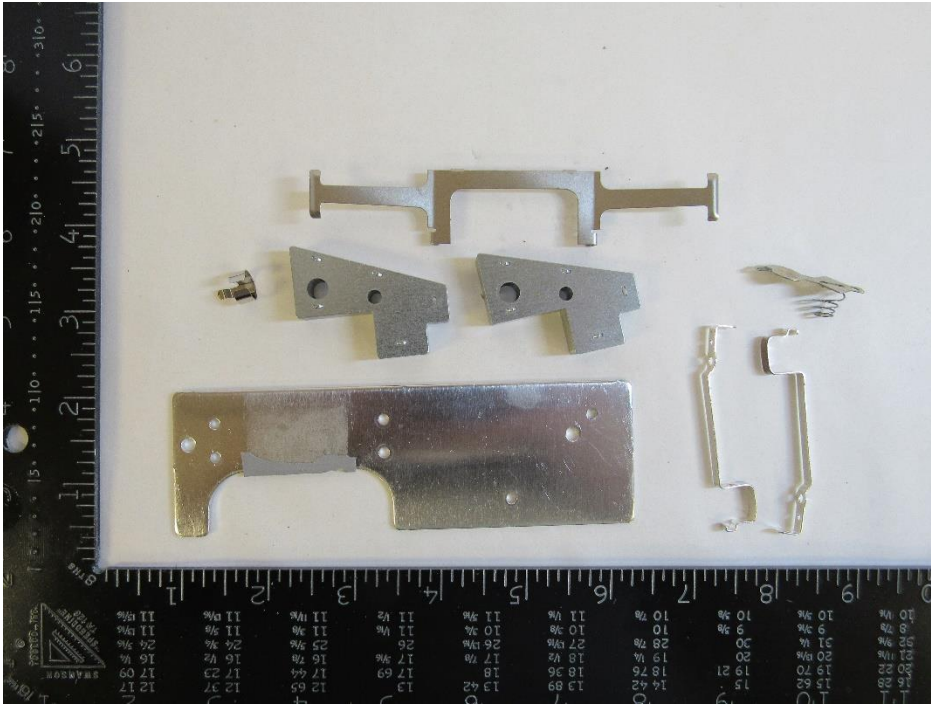
Nr.	Component	Material	Wt. (g)	Comments
5	Sensors	Mixed	63.7	Reuse





## 7. Material/components which have an economic value at end-of-life.

6



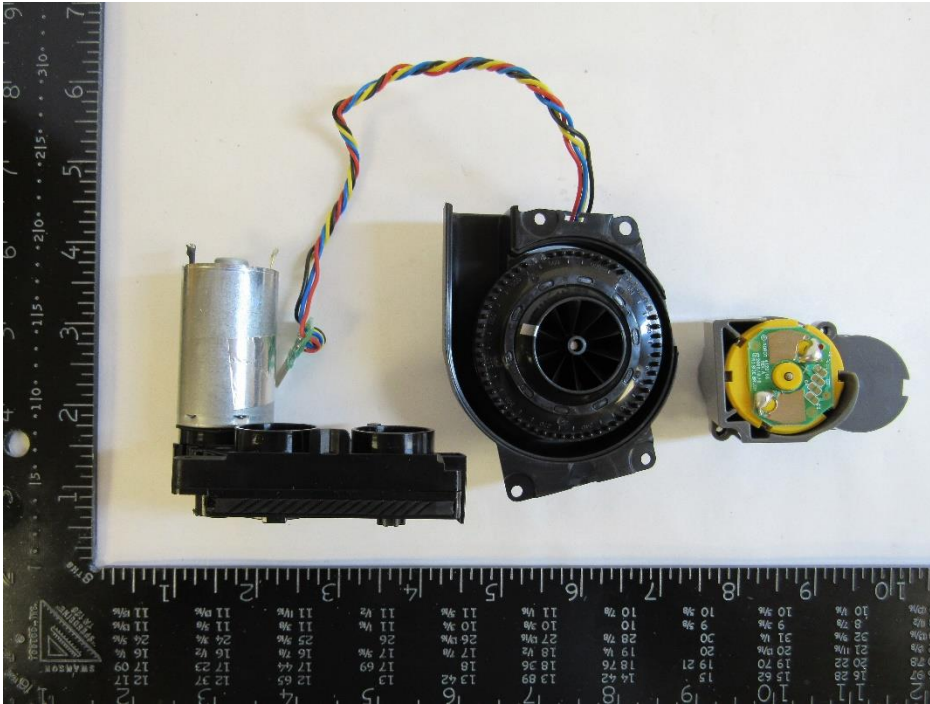
### Recycling Information:

Nr.	Component	Material	Wt. (g)	Comments
6	Misc. Alloy Parts	Alloy	151.8	Recycle





## 7. Material/components which have an economic value at end-of-life.

**Recycling Information:**

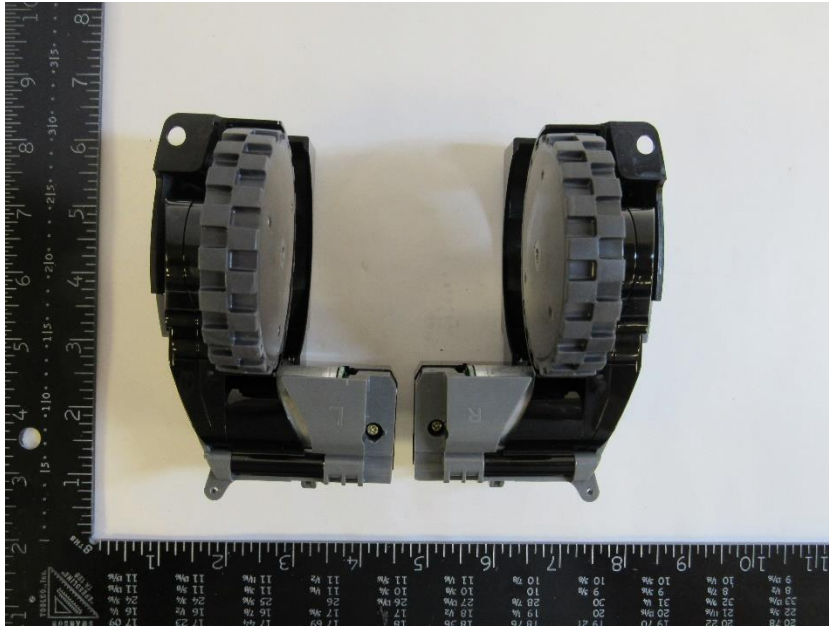
Nr.	Component	Material	Wt. (g)	Comments
7	Motors	Mixed	252.3	Reuse





## 7. Material/components which have an economic value at end-of-life.

8



### Recycling Information:

Nr.	Component	Material	Wt. (g)	Comments
8	Large Wheel Assemblies	Mixed	403.7	Reuse





## 7. Material/components which have an economic value at end-of-life.

9



### Recycling Information:

Nr.	Component	Material	Wt. (g)	Comments
9	Small Wheel Assembly	Mixed	25.4	Reuse





## 7. Material/components which have an economic value at end-of-life.

10



### Recycling Information:

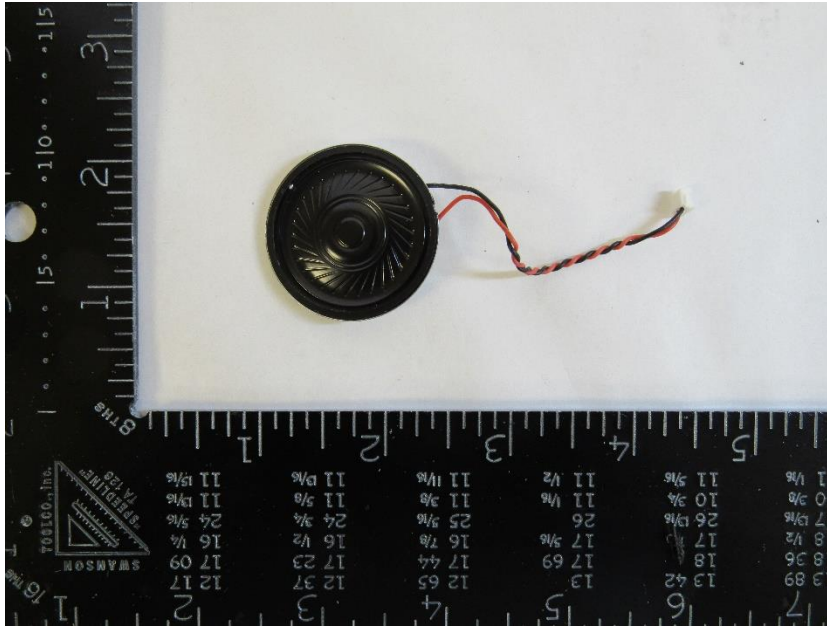
Nr.	Component	Material	Wt. (g)	Comments
10	Power Cord	Mixed	96.4	Reuse





## 7. Material/components which have an economic value at end-of-life.

11



### Recycling Information:

Nr.	Component	Material	Wt. (g)	Comments
11	Speaker	Mixed	8.7	Reuse



**8. Recycling Information Summary:**

Nr.	Component	Material	Wt. (g)	Comments
1	PCBs	Mixed	226.6	Treat Separately, 50% Recycle
2	Non-Reusable Cables	Mixed	25.9	Treat Separately, 40% Recycle
3	Corner Brushes	Mixed	11.4	Treat Separately, 50% Recycle
4	Batteries	Mixed	280.7	Treat Separately, Refer to Batteries Directive (2006/66/EC)
5	Large Brushes	Mixed	78.2	Treat Separately, 30% Recycle
Nr.	Component	Material	Wt. (g)	Comments
1	Misc. Rubber Parts	Non-ID Rubber	42.1	Waste
2	Foam	Non-ID Foam	0.3	Waste
3	Filter Textile	Non-ID Textile	17.0	Waste
4	Misc. Plastic Parts	Non-ID Plastic	1165.0	Incinerate
Nr.	Component	Material	Wt. (g)	Comments
1	Unit Top Cover	ABS	366.2	Recycle
2	Chassis	ABS	461.5	Recycle
3	Bumper	ABS	113.0	Recycle



**8. Recycling Information Summary:**

Nr.	Component	Material	Wt. (g)	Comments
4	Hardware	Alloy	57.6	Recycle
5	Sensors	Mixed	63.7	Reuse
6	Misc. Alloy Parts	Alloy	151.8	Recycle
7	Motors	Mixed	252.3	Reuse
8	Large Wheel Assemblies	Mixed	403.7	Reuse
9	Small Wheel Assembly	Mixed	25.4	Reuse
10	Power Cord	Mixed	96.4	Reuse
11	Speaker	Mixed	8.7	Reuse

Special notes:  
Some other components can be recycled.  
Please refer to the WEEE summary report.  
All images for representative purposes only.