


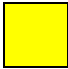

1. Manufacturer Information

Manufacturer:	iRobot Corporation
Address:	8 Crosby Drive, Bedford, MA 01730 USA
Website:	http://www.irobot.com/
File Number:	315G0121.001



2. Product Information

Model Identification	Roomba 980
Product Description:	Roomba 900 Series
Type Designation(s):	Robot Vacuum
WEEE Category:	Category 2 (Small Household Appliances)
Weight [g]:	4229g
Recyclability:	85.78%

	Type I	Material/components which must be removed and treated separately According to Annex II of the 2012/19/EU (WEEE) directive.
	Type II	Material/components which can disturb certain recycling processes.
	Type III	Material/components which have an economic value at end-of-life.

3. Recycling Information: (Optional)

- Are plastic parts >10g marked according to ISO 11469?
- Is the product manufactured of 20% recycled material?

4. Directives and Standards: (Optional)

The following directives and standards have been considered:

- EN 50419:2006 - "Marking of electrical and electronic equipment in accordance with Article 11(2) of Directive 2012/19/EU (WEEE)
- 2012/19/EU - Directive 2012/19/EU of the European Parliament and of the Council of July 4, 2012 on waste of electrical and electronic equipment (WEEE)
- ISO 11469 - "Generic Identification and Marking of Plastic Products"



5. Instructions for removing materials/components which must be removed and treated separately:



Recycling Information:

Nr.	Component	Material	Wt. (g)	Comments
1	PCB / Mixed Components	Mixed	212	Treat Separately, 50% Recycle



5. Instructions for removing materials/components which must be removed and treated separately:



Recycling Information:

Nr.	Component	Material	Wt. (g)	Comments
2	Non Reusable Cables	Mixed	58	Treat Separately, 60% Recycle, 40% Incinerate



5. Instructions for removing materials/components which must be removed and treated separately:

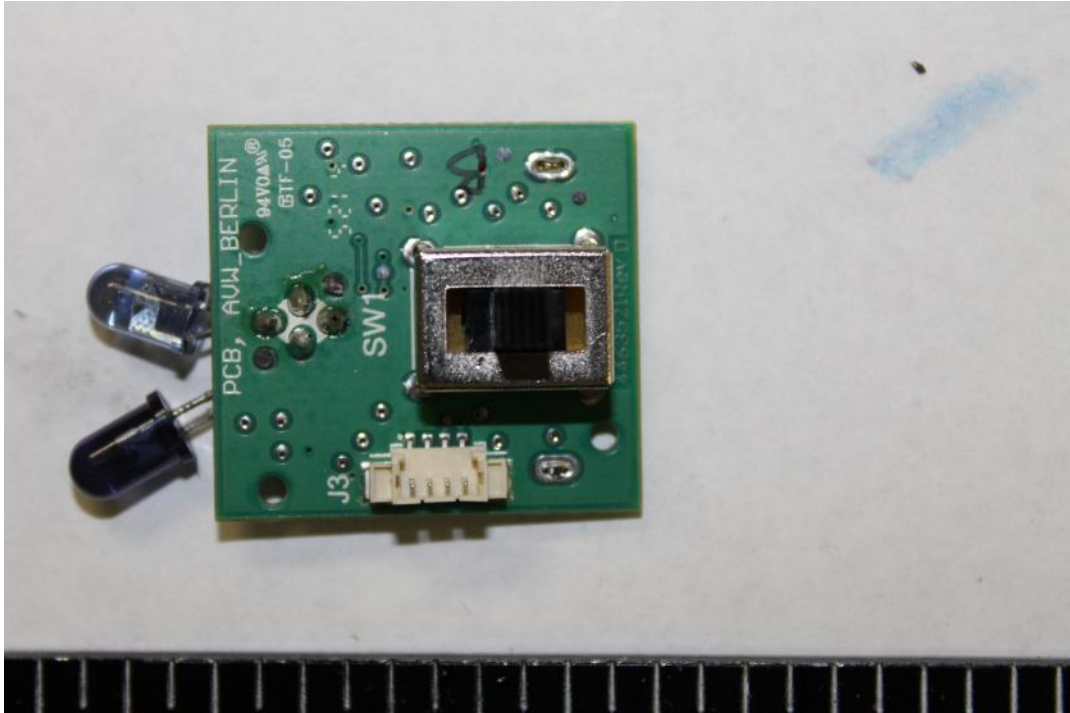


Recycling Information:

Nr.	Component	Material	Wt. (g)	Comments
3	Non Reusable Cables	Mixed	641	Treat Separately See Battery Directive



5. Instructions for removing materials/components which must be removed and treated separately:



Recycling Information:

Nr.	Component	Material	Wt. (g)	Comments
4	Auto Virtual Wall PCB	Mixed	6	Treat Separately See Battery Directive



6. Components/materials which may disturb certain recycling processes

1



Recycling Information:

Nr.	Component	Material	Wt. (g)	Comments
1	Various Plastic Brackets, Covers, and Gears	Non-ID Plastic	230	Incinerate



6. Components/materials which may disturb certain recycling processes

2



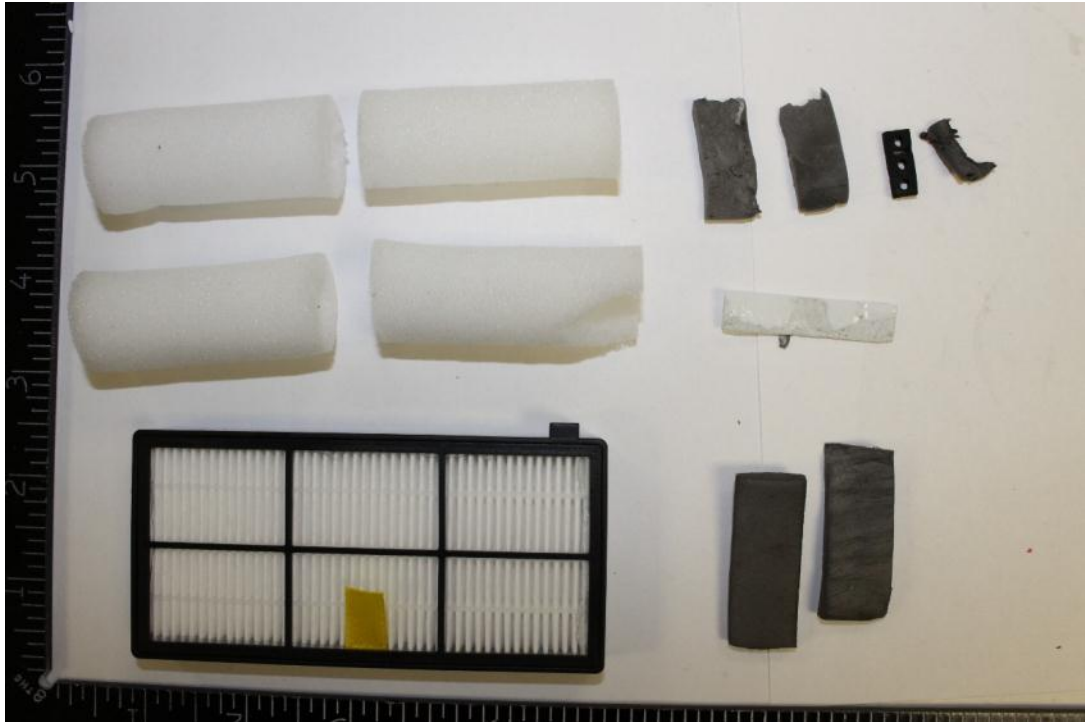
Recycling Information:

Nr.	Component	Material	Wt. (g)	Comments
2	Various Rubber Blades, Covers, and Seals	Non-ID rubber	74	Waste



6. Components/materials which may disturb certain recycling processes

3



Recycling Information:

Nr.	Component	Material	Wt. (g)	Comments
3	Various Foam Filters, Blade Cushions, and Spacers	Non-ID Foam	7	Waste

6. Components/materials which may disturb certain recycling processes

4



Recycling Information:

Nr.	Component	Material	Wt. (g)	Comments
4	Auto Virtual Wall Plastic	Non-ID Plastic	67	Incinerate



7. Material/components which have an economic value at end-of-life.

**Recycling Information:**

Nr.	Component	Material	Wt. (g)	Comments
1	Motors	Mixed	244	Reuse



7. Material/components which have an economic value at end-of-life.



Recycling Information:

Nr.	Component	Material	Wt. (g)	Comments
2	Various Plastic Pieces	ABS Plastic	2325	Recycle



7. Material/components which have an economic value at end-of-life.



Recycling Information:

Nr.	Component	Material	Wt. (g)	Comments
3	Misc. Fasteners, Plates and Brackets	Steel	188	Recycle



7. Material/components which have an economic value at end-of-life.

**Recycling Information:**

Nr.	Component	Material	Wt. (g)	Comments
4	Auto Virtual Wall Battery Terminals and Screws	Steel	2	Recycle

5

7. Material/components which have an economic value at end-of-life.

**Recycling Information:**

Nr.	Component	Material	Wt. (g)	Comments
5	US PWR Cable	Mixed	96	Reuse



7. Material/components which have an economic value at end-of-life.

6



Recycling Information:

Nr.	Component	Material	Wt. (g)	Comments
6	EU PWR Cable	Mixed	79	Reuse

Special notes:

Some other components can be recycled.
Please refer to the WEEE summary report.
All images for representative purposes only.