


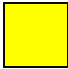

1. Manufacturer Information

Manufacturer:	iRobot Corporation
Address:	8 Crosby Drive Bedford, MA 01730 USA
Website:	www.irobot.com
File Number:	320G0658.001



2. Product Information

Model Identification	Roomba Model RVD-Y1
Product Description	Robot Vacuum
WEEE Category:	Category 5 (Small Equipment)
Weight [g]:	3545.5g
Recyclability:	78.31%

	Type I	Material/components which must be removed and treated separately According to Annex II of the 2012/19/EU (WEEE) directive.
	Type II	Material/components which can disturb certain recycling processes.
	Type III	Material/components which have an economic value at end-of-life.

3. Recycling Information: (Optional)

- Are plastic parts >10g marked according to ISO 11469?
- Is the product manufactured of 20% recycled material?

4. Directives and Standards: (Optional)

The following directives and standards have been considered:

- EN 50419:2006 - "Marking of electrical and electronic equipment in accordance with Article 11(2) of Directive 2012/19/EU (WEEE)
- 2012/19/EU - Directive 2012/19/EU of the European Parliament and of the Council of July 4, 2012 on waste of electrical and electronic equipment (WEEE)
- ISO 11469 - "Generic Identification and Marking of Plastic Products"



5. Instructions for removing materials/components which must be removed and treated separately:

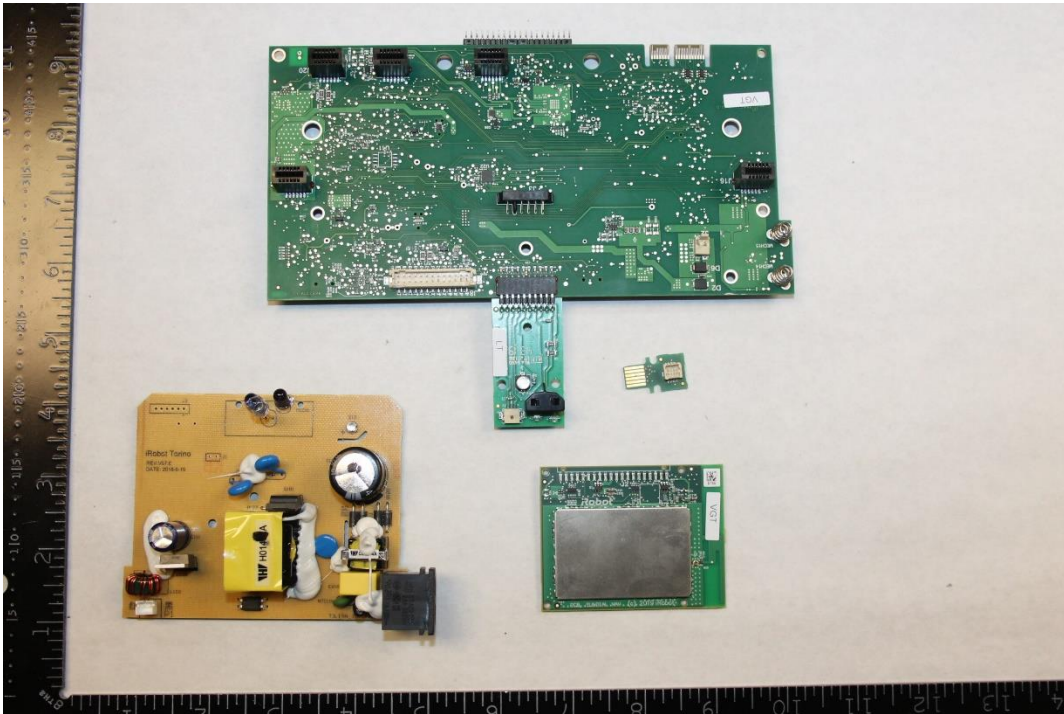


Recycling Information:

Nr.	Component	Material	Wt. (g)	Comments
1	Battery Pack	Battery	234.5	Treat Separately < Refer To Batteries Directive (2006/66/EC)>



5. Instructions for removing materials/components which must be removed and treated separately:

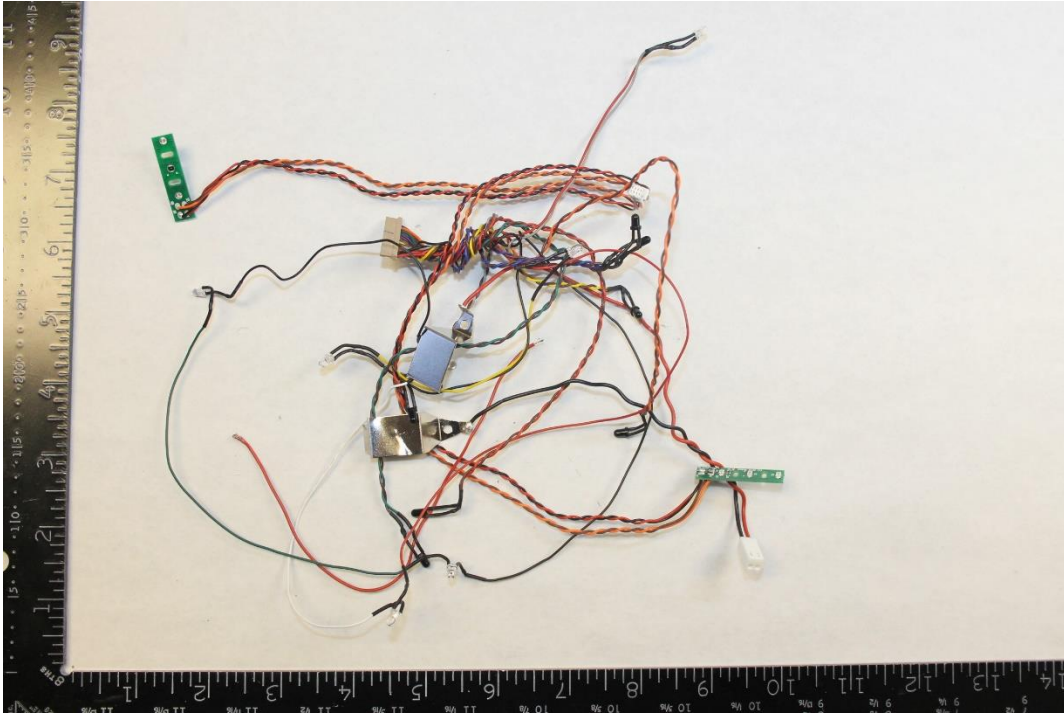


Recycling Information:

Nr.	Component	Material	Wt. (g)	Comments
2	PCBs	Mixed	181.6	Treat Separately, 50% Recycle



5. Instructions for removing materials/components which must be removed and treated separately:

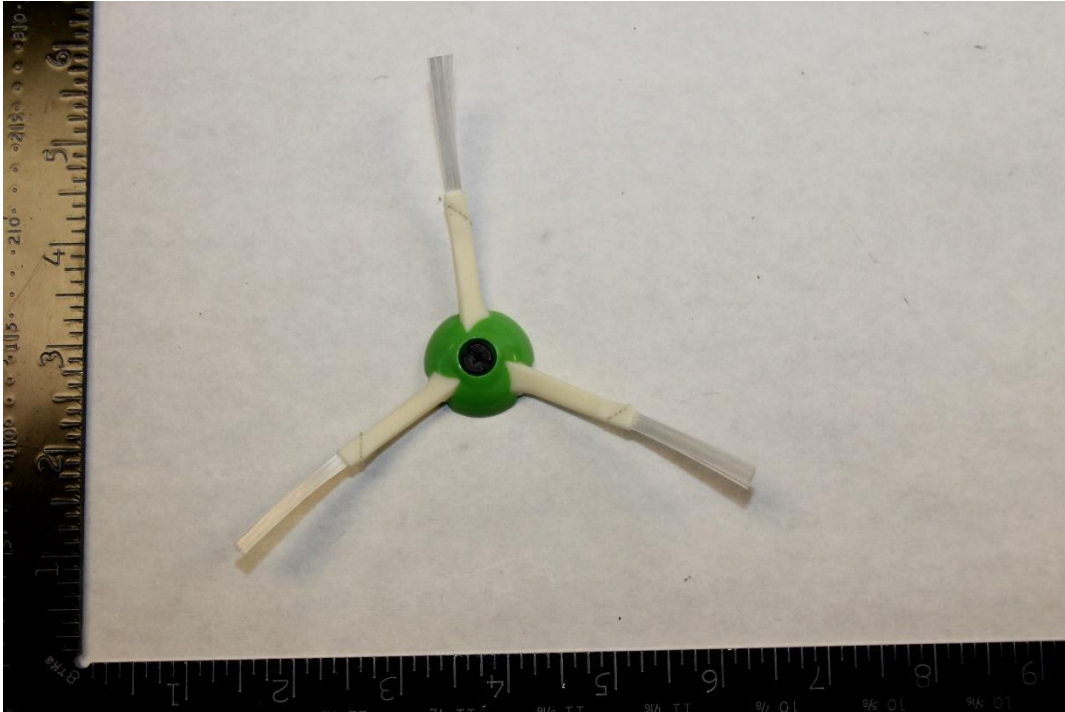


Recycling Information:

Nr.	Component	Material	Wt. (g)	Comments
3	Non-reusable Cables	Mixed	20.3	Treat Separately, 40% Recycle



5. Instructions for removing materials/components which must be removed and treated separately:



Recycling Information:

Nr.	Component	Material	Wt. (g)	Comments
4	Corner Brush	Mixed	6.2	Treat Separately, 50% Recycle



5. Instructions for removing materials/components which must be removed and treated separately:



Recycling Information:

Nr.	Component	Material	Wt. (g)	Comments
5	Large Brushes	Mixed	70.1	Treat Separately, 30% Recycle



6. Components/materials which may disturb certain recycling processes

1



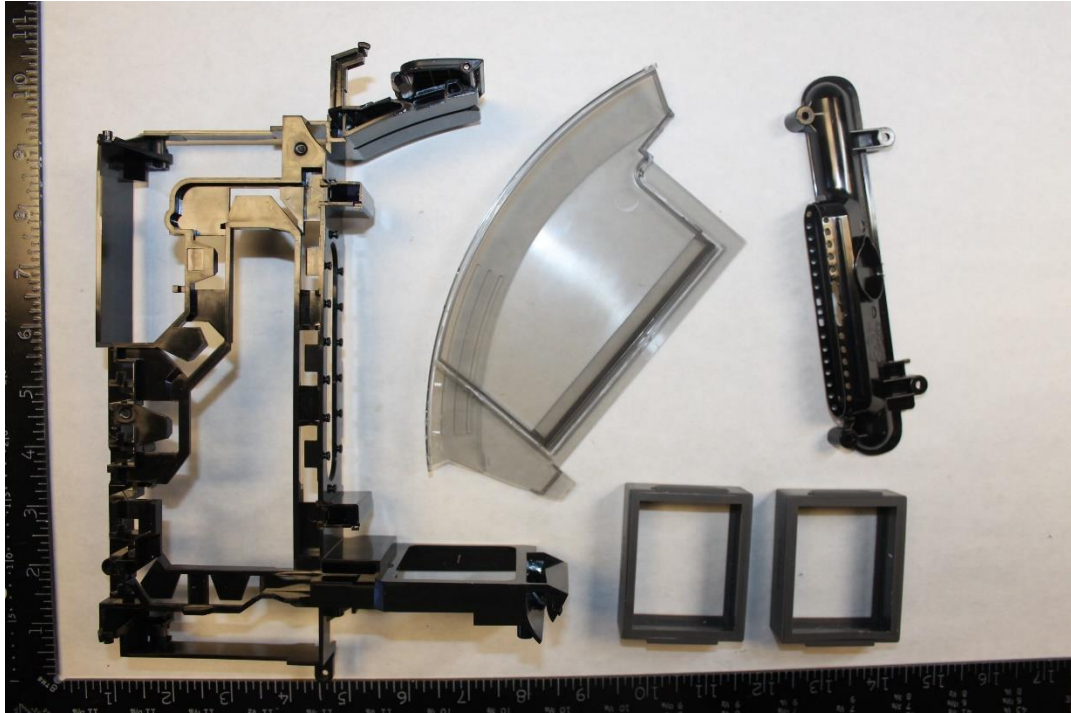
Recycling Information:

Nr.	Component	Material	Wt. (g)	Comments
1	Small Plastic Parts	Non-ID Plastic	125.6	Incinerate



6. Components/materials which may disturb certain recycling processes

2

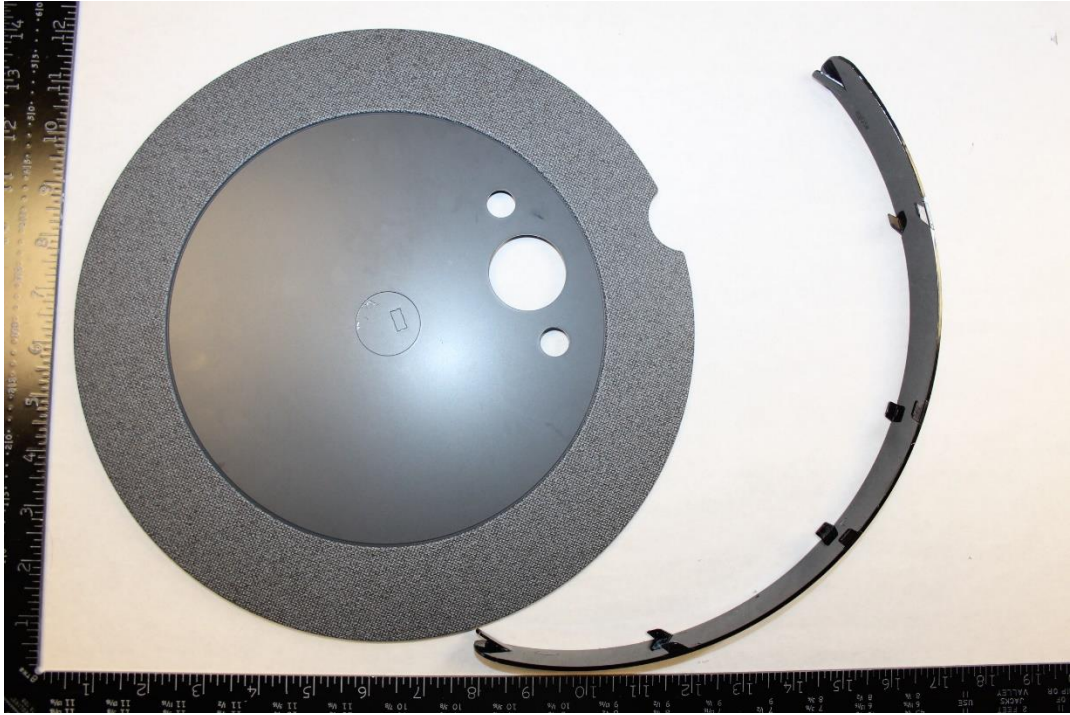


Recycling Information:

Nr.	Component	Material	Wt. (g)	Comments
2	Inner Plastic Parts	Non-ID Plastic	184.8	Incinerate

6. Components/materials which may disturb certain recycling processes

3



Recycling Information:

Nr.	Component	Material	Wt. (g)	Comments
3	Outer Housing	Non-ID Plastic	198.4	Incinerate



6. Components/materials which may disturb certain recycling processes

4



Recycling Information:

Nr.	Component	Material	Wt. (g)	Comments
4	Rubber Pieces	Non-ID Rubber	35.4	Waste



6. Components/materials which may disturb certain recycling processes

5

**Recycling Information:**

Nr.	Component	Material	Wt. (g)	Comments
5	Filter Textile	Non-ID Textile	17.6	Waste



7. Material/components which have an economic value at end-of-life.

1



Recycling Information:

Nr.	Component	Material	Wt. (g)	Comments
1	US Power Cord	Mixed	101.9	Reuse



7. Material/components which have an economic value at end-of-life.

2

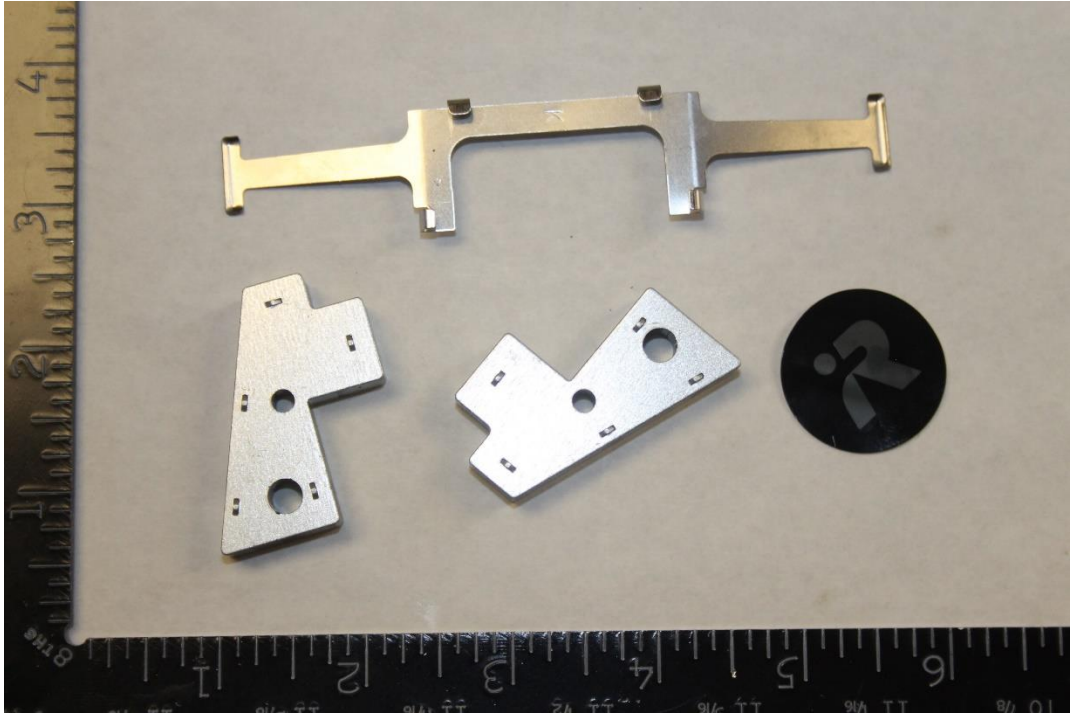
**Recycling Information:**

Nr.	Component	Material	Wt. (g)	Comments
2	Hardware	Alloy	42.0	Recycle



7. Material/components which have an economic value at end-of-life.

3



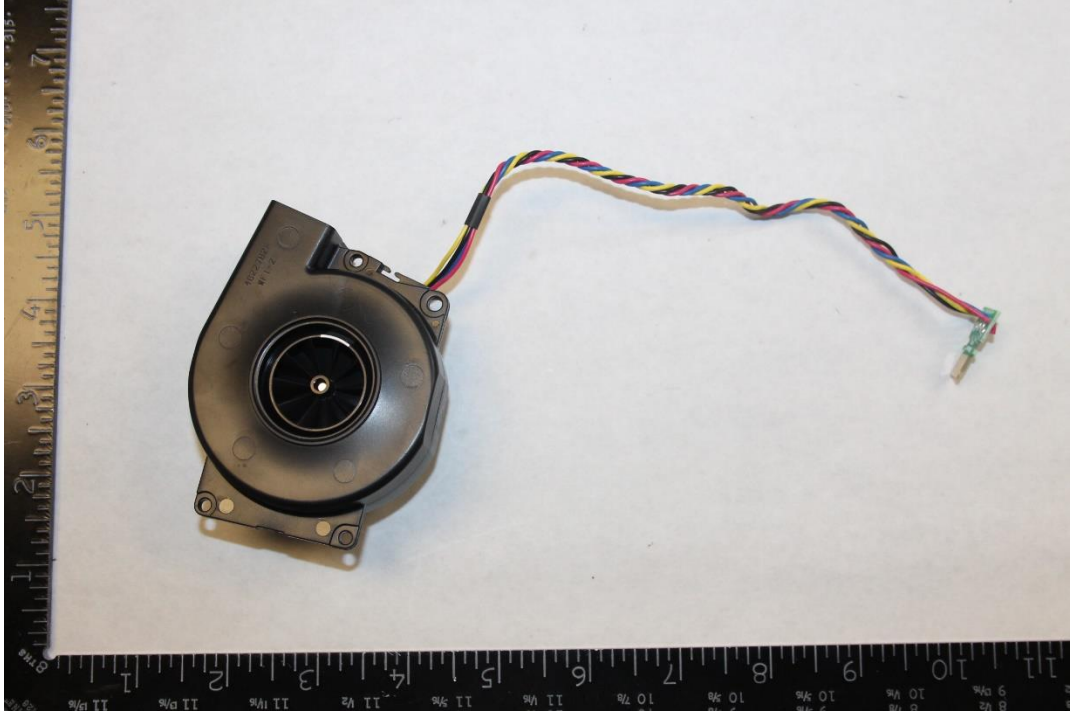
Recycling Information:

Nr.	Component	Material	Wt. (g)	Comments
3	Additional Hardware	Alloy	124.0	Recycle



7. Material/components which have an economic value at end-of-life.

4



Recycling Information:

Nr.	Component	Material	Wt. (g)	Comments
4	Fan	Mixed	65.0	Reuse



7. Material/components which have an economic value at end-of-life.

5



Recycling Information:

Nr.	Component	Material	Wt. (g)	Comments
5	Large Wheel Assemblies	Mixed	406.5	Reuse



7. Material/components which have an economic value at end-of-life.



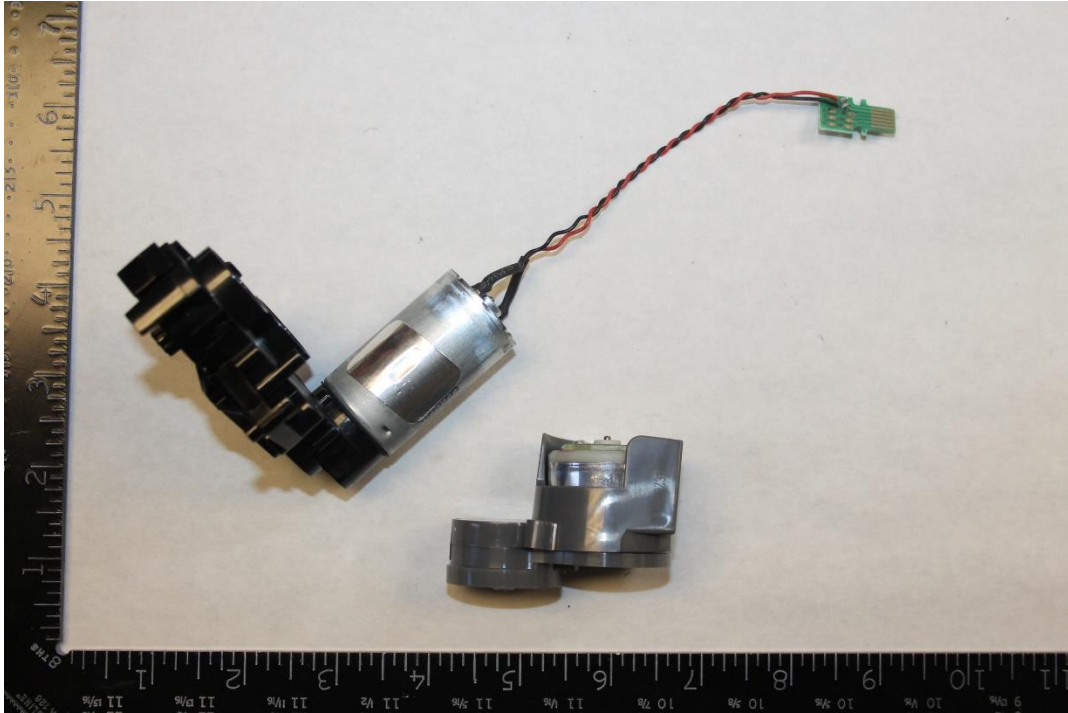
Recycling Information:

Nr.	Component	Material	Wt. (g)	Comments
6	Small Wheel Assembly	Mixed	25.1	Reuse
7	Speaker	Mixed	8.2	Reuse



7. Material/components which have an economic value at end-of-life.

8



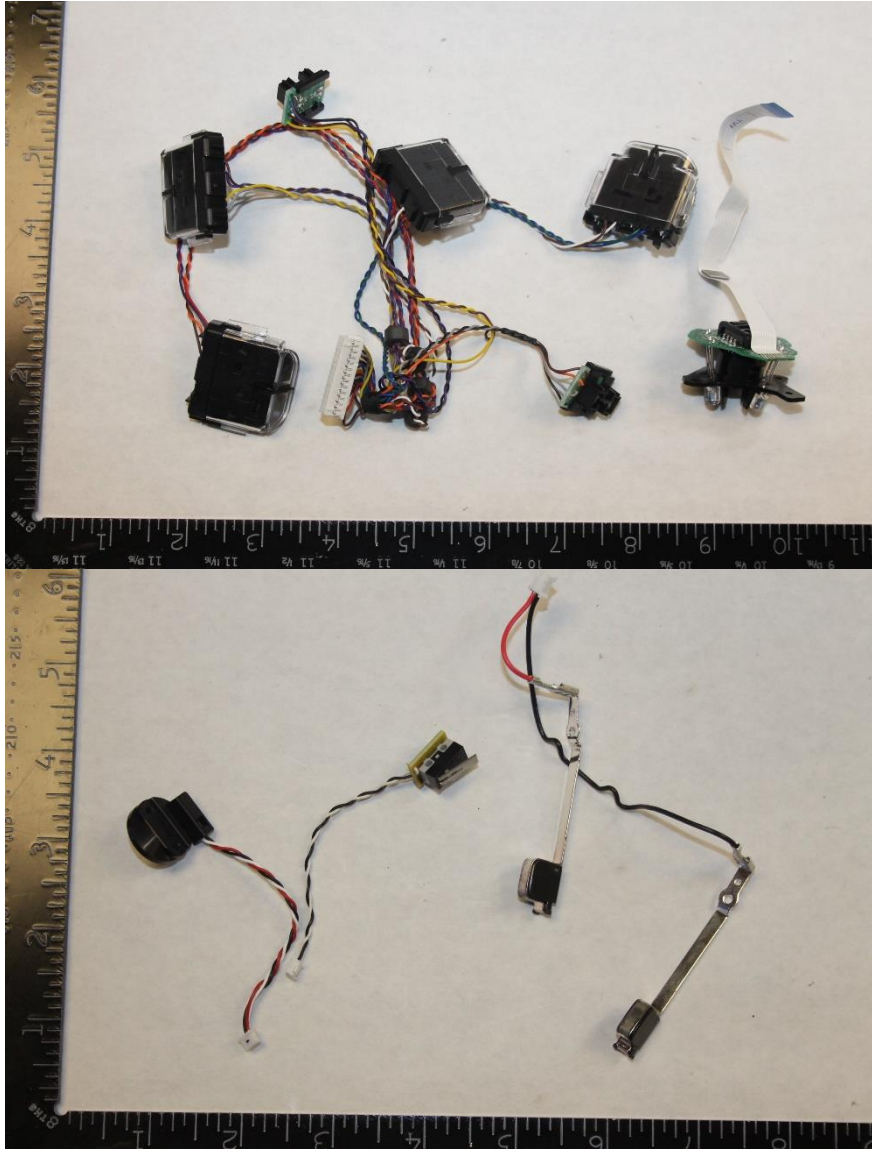
Recycling Information:

Nr.	Component	Material	Wt. (g)	Comments
8	Motors	Mixed	198.7	Reuse



7. Material/components which have an economic value at end-of-life.

9

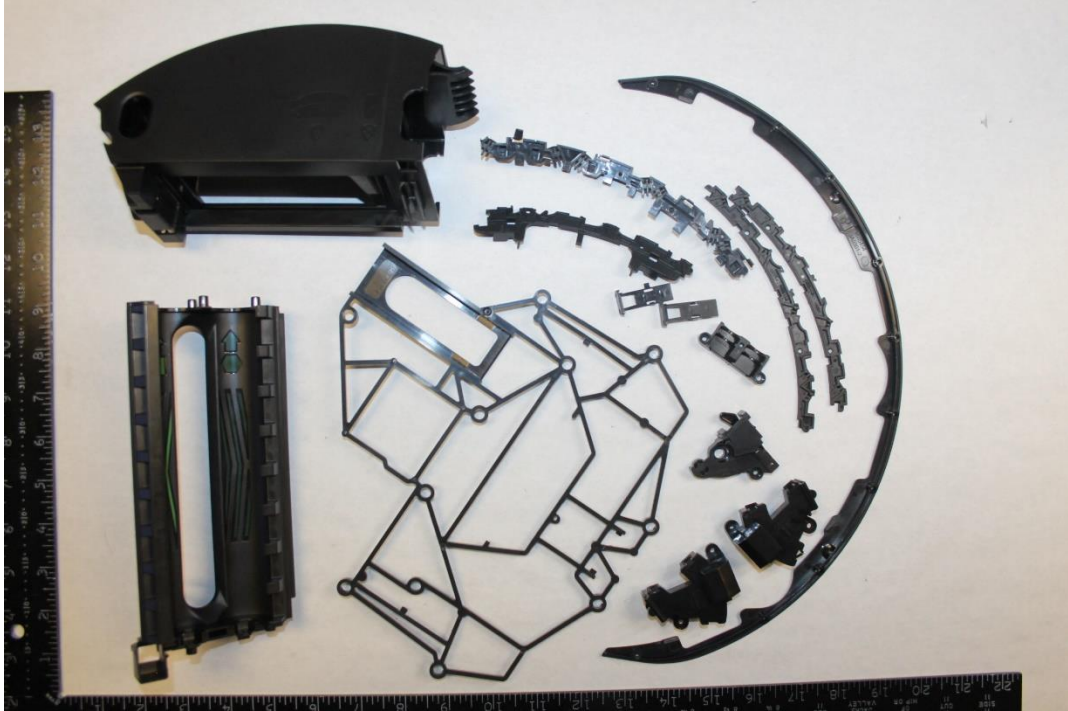


Recycling Information:

Nr.	Component	Material	Wt. (g)	Comments
9	Sensors	Mixed	56.4	Reuse



7. Material/components which have an economic value at end-of-life.



10

Recycling Information:

Nr.	Component	Material	Wt. (g)	Comments
10	Inner Plastic Parts	ABS	277.4	Recycle



7. Material/components which have an economic value at end-of-life.



11

Recycling Information:

Nr.	Component	Material	Wt. (g)	Comments
11	Lower Housing and Bumper	ABS	284.6	Recycle



7. Material/components which have an economic value at end-of-life.

12

**Recycling Information:**

Nr.	Component	Material	Wt. (g)	Comments
12	Chassis	ABS-FR	472.5	Recycle



7. Material/components which have an economic value at end-of-life.

13

**Recycling Information:**

Nr.	Component	Material	Wt. (g)	Comments
13	Upper Housing	ABS-FR	267.1	Recycle



7. Material/components which have an economic value at end-of-life.

14



Recycling Information:

Nr.	Component	Material	Wt. (g)	Comments
14	Small Brackets	POM	8.9	Recycle



7. Material/components which have an economic value at end-of-life.



15

Recycling Information:

Nr.	Component	Material	Wt. (g)	Comments
15	Home Base Casing	ABS-PC	136.3	Recycle

8. Recycling Information Summary:

Nr.	Component	Material	Wt. (g)	Comments
1	Battery Pack	Battery	234.5	Treat Separately < Refer To Batteries Directive (2006/66/EC)>
2	PCBs	Mixed	181.6	Treat Separately, 50% Recycle
3	Non-reusable Cables	Mixed	20.3	Treat Separately, 40% Recycle
4	Corner Brush	Mixed	6.2	Treat Separately, 50% Recycle
5	Large Brushes	Mixed	70.1	Treat Separately, 30% Recycle
Nr.	Component	Material	Wt. (g)	Comments
1	Small Plastic Parts	Non-ID Plastic	125.6	Incinerate
2	Inner Plastic Parts	Non-ID Plastic	184.8	Incinerate
3	Outer Housing	Non-ID Plastic	198.4	Incinerate
4	Rubber Pieces	Non-ID Rubber	35.4	Waste
5	Filter Textile	Non-ID Textile	17.6	Waste
Nr.	Component	Material	Wt. (g)	Comments
1	US Power Cord	Mixed	101.9	Reuse
2	Hardware	Alloy	42.0	Recycle
3	Additional Hardware	Alloy	124.0	Recycle

8. Recycling Information Summary:

Nr.	Component	Material	Wt. (g)	Comments
4	Fan	Mixed	65.0	Reuse
5	Large Wheel Assemblies	Mixed	406.5	Reuse
6	Small Wheel Assembly	Mixed	25.1	Reuse
7	Speaker	Mixed	8.2	Reuse
8	Motors	Mixed	198.7	Reuse
9	Sensors	Mixed	56.4	Reuse
10	Inner Plastic Parts	ABS	277.4	Recycle
11	Lower Housing and Bumper	ABS	284.6	Recycle
12	Chassis	ABS-FR	472.5	Recycle
13	Upper Housing	ABS-FR	267.1	Recycle
14	Small Brackets	POM	8.9	Recycle
15	Home Base Casing	ABS-PC	136.3	Recycle

Special notes:

Some other components can be recycled.
Please refer to the WEEE summary report.
All images for representative purposes only.