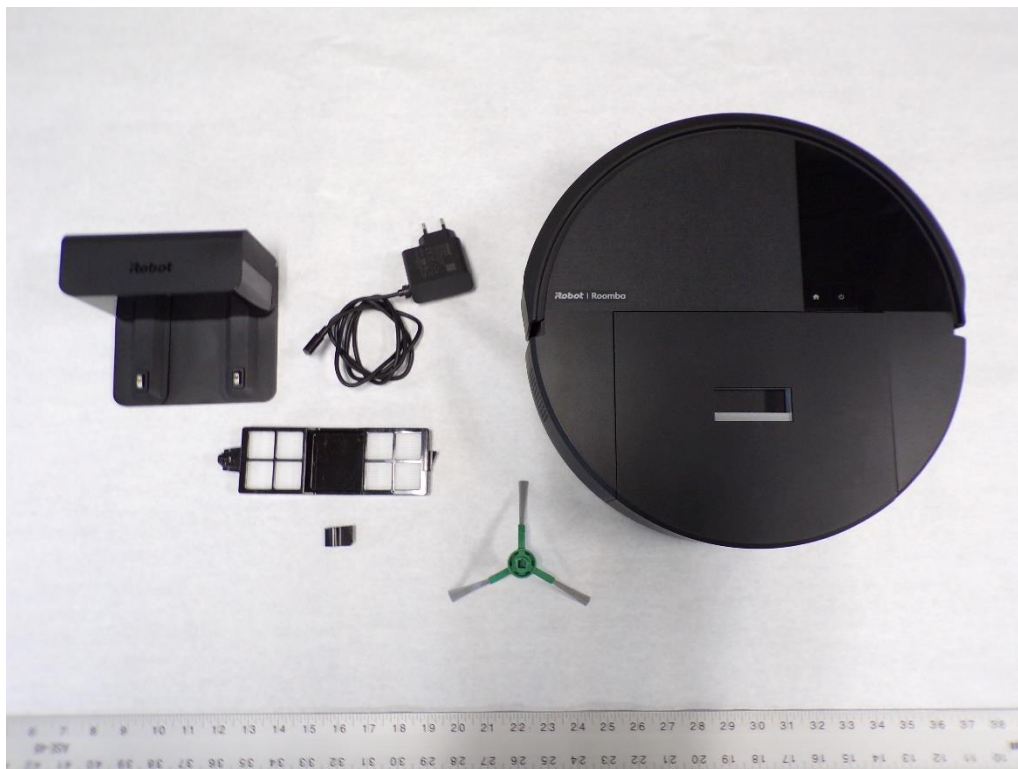



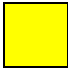

1. Manufacturer Information

Manufacturer:	iRobot Corporation
Address:	8 Crosby Drive, Bedford, MA 01730
Website:	https://www.irobot.com/
File Number:	US24HKPD.001



2. Product Information

Model Identification	RCG-Y1 and ADT-N1
Product Description	Roomba and Dock
Type Designation(s):	Roomba Vacuum and Charging Station
WEEE Category:	Category 5 (Small Equipment)
Weight [g]:	3,940g
Recyclability:	88.39%

	Type I	Material/components which must be removed and treated separately According to Annex II of the 2012/19/EU (WEEE) directive.
	Type II	Material/components which can disturb certain recycling processes.
	Type III	Material/components which have an economic value at end-of-life.

3. Recycling Information: (Optional)

- Are plastic parts >10g marked according to ISO 11469?
- Is the product manufactured of 20% recycled material?

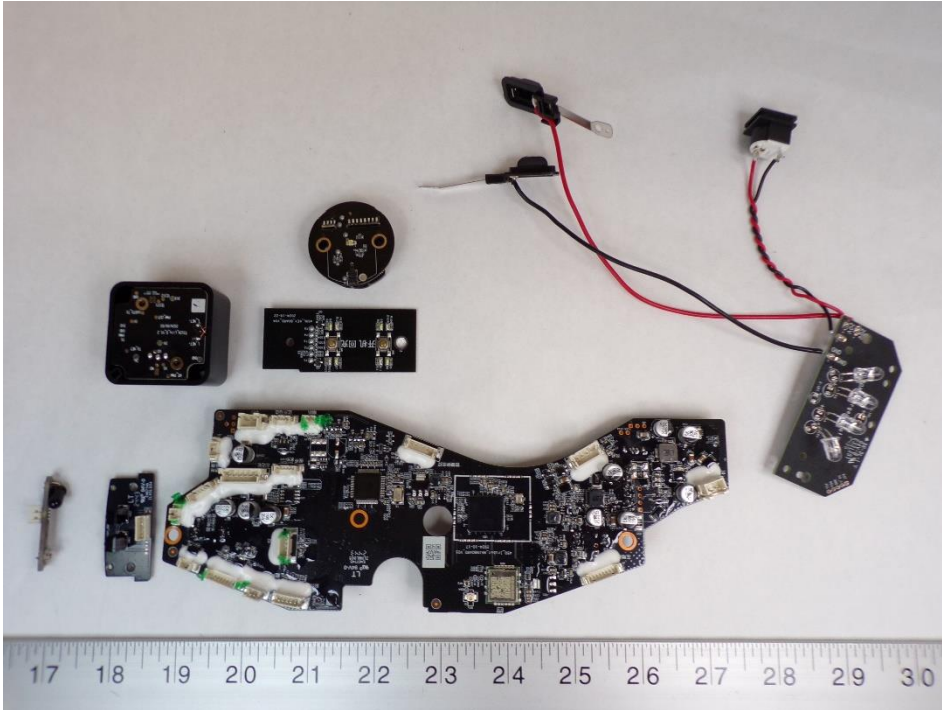
4. Directives and Standards: (Optional)

The following directives and standards have been considered:

- EN 50419:2006 - "Marking of electrical and electronic equipment in accordance with Article 11(2) of Directive 2012/19/EU (WEEE)
- 2012/19/EU - Directive 2012/19/EU of the European Parliament and of the Council of July 4, 2012 on waste of electrical and electronic equipment (WEEE)
- ISO 11469 - "Generic Identification and Marking of Plastic Products"



5. Instructions for removing materials/components which must be removed and treated separately:

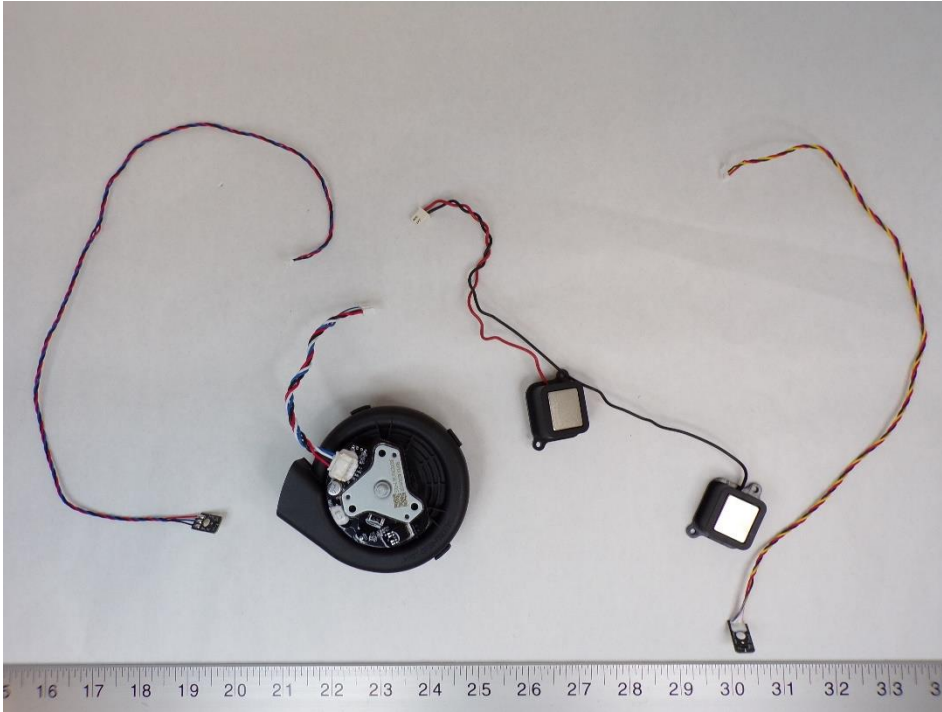


Recycling Information:

Nr.	Component	Material	Wt. (g)	Comments
1	PCB / Mixed Components	PCB / Mixed	112.85	Treat Separately, 50% Recycle



5. Instructions for removing materials/components which must be removed and treated separately:



Recycling Information:

Nr.	Component	Material	Wt. (g)	Comments
2	Non Reusable Cables / Mixed Components	Mixed	107.86	Treat Separately, 60% Recycle



5. Instructions for removing materials/components which must be removed and treated separately:



Recycling Information:

Nr.	Component	Material	Wt. (g)	Comments
3	Motor Harnesses / Mix Components	Mixed	391.77	Treat Separately, 70% Recycle



5. Instructions for removing materials/components which must be removed and treated separately:

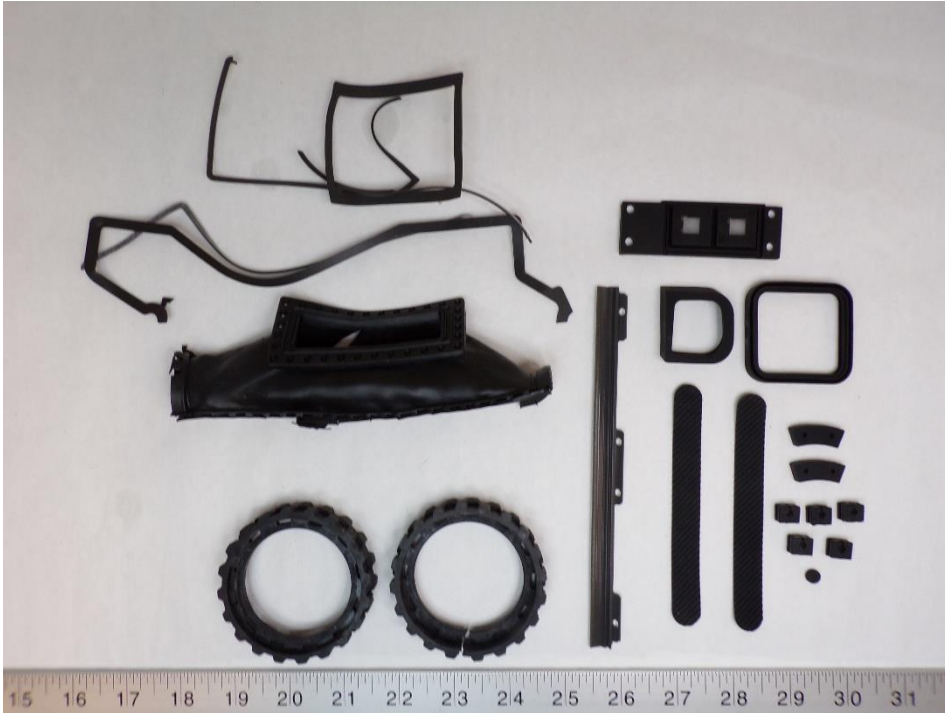


Recycling Information:

Nr.	Component	Material	Wt. (g)	Comments
4	Batteries	Battery	276.04	Treat Separately < Refer To Batteries Directive (2006/66/EC)>

1

6. Components/materials which may disturb certain recycling processes

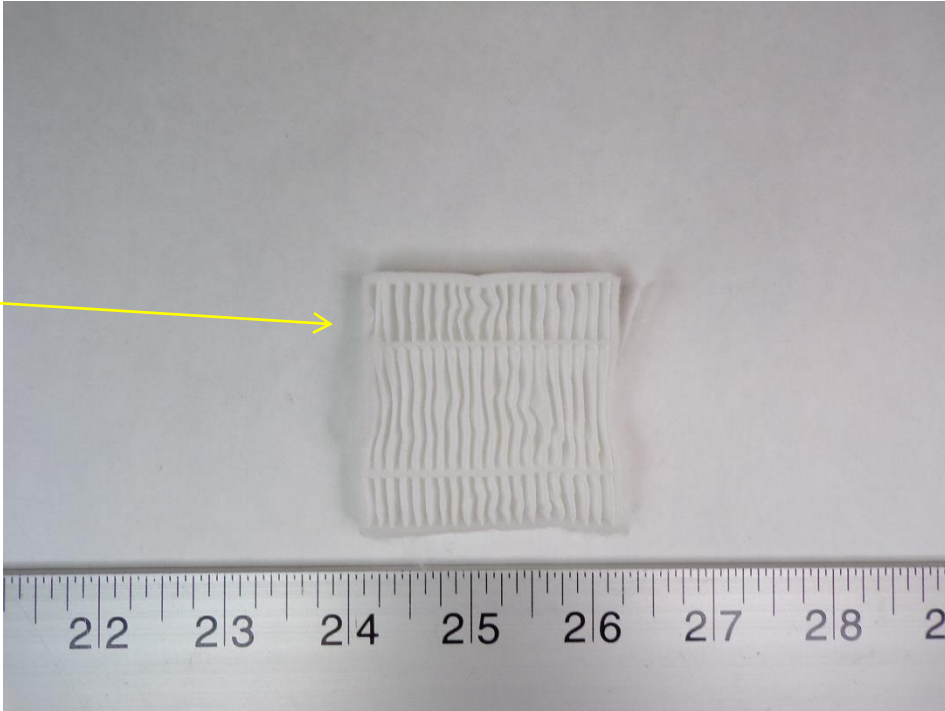
**Recycling Information:**

Nr.	Component	Material	Wt. (g)	Comments
1	Rubber	Non-ID rubber	62.13	Waste



6. Components/materials which may disturb certain recycling processes

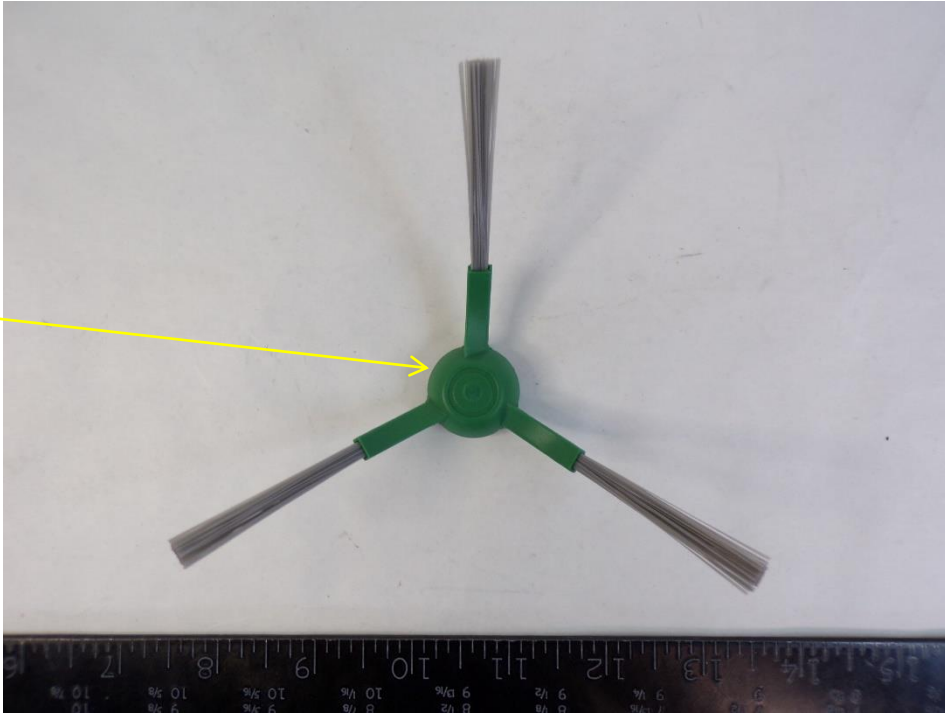
2

**Recycling Information:**

Nr.	Component	Material	Wt. (g)	Comments
2	Filter	Non-ID Textile	12.64	Waste



6. Components/materials which may disturb certain recycling processes

3**Recycling Information:**

Nr.	Component	Material	Wt. (g)	Comments
3	Brush	Non-ID Plastic	5.12	Incinerate

4

6. Components/materials which may disturb certain recycling processes

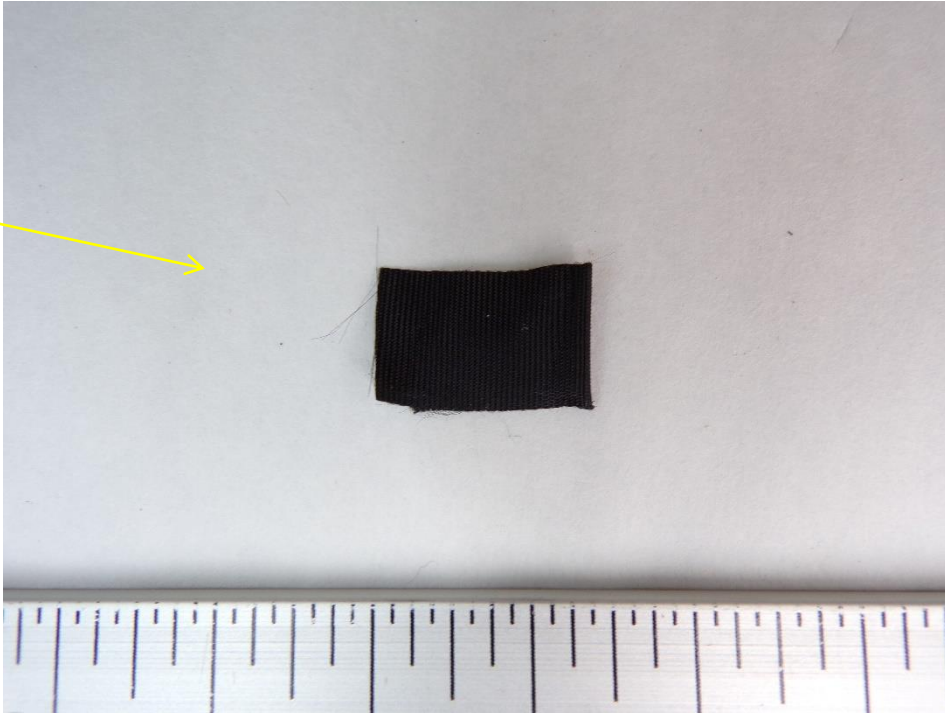
**Recycling Information:**

Nr.	Component	Material	Wt. (g)	Comments
4	Non-ID Plastic	Non-ID Plastic	103.6	Incinerate

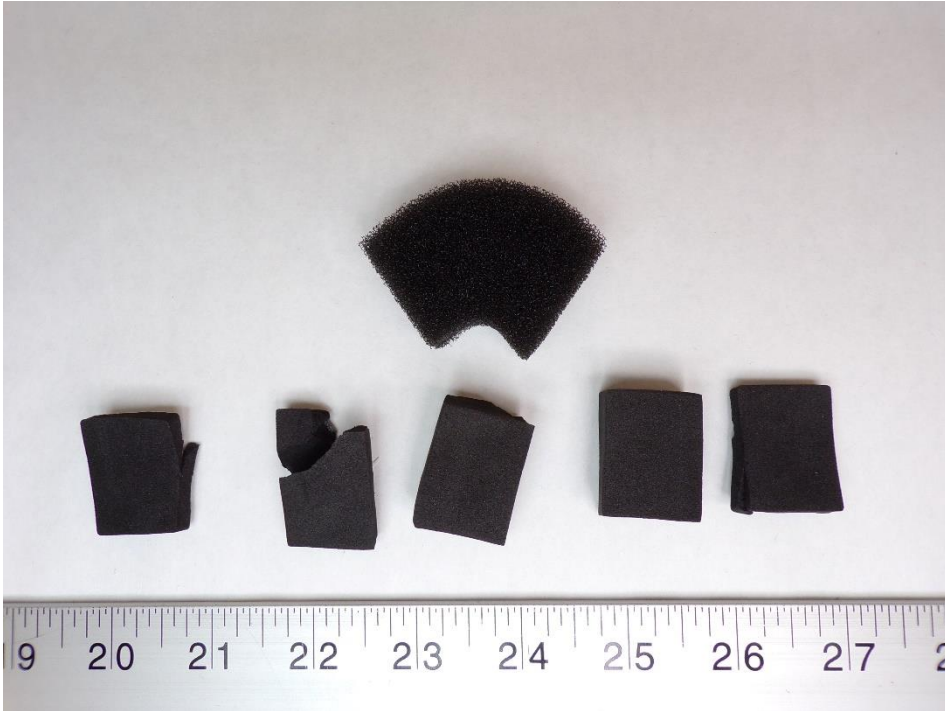


6. Components/materials which may disturb certain recycling processes

5

**Recycling Information:**

Nr.	Component	Material	Wt. (g)	Comments
5	Non-ID Textile Tape	Non-ID Textile	0.10	Waste

6. Components/materials which may disturb certain recycling processes**6****Recycling Information:**

Nr.	Component	Material	Wt. (g)	Comments
6	Non-ID Foams	Non-ID Foam	2.78	Waste



7. Material/components which have an economic value at end-of-life.

1

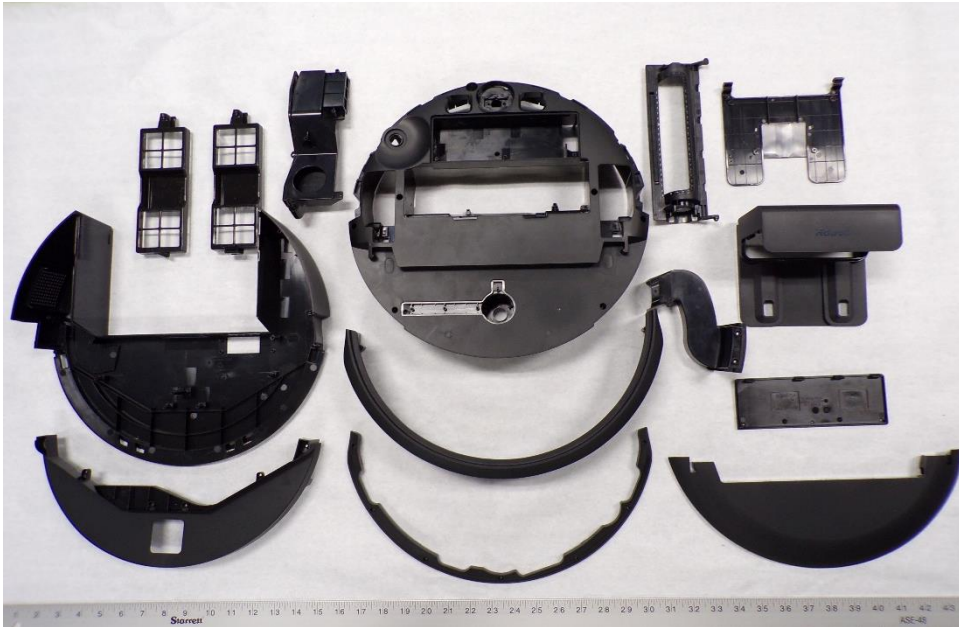
**Recycling Information:**

Nr.	Component	Material	Wt. (g)	Comments
1	ABS Plastic	ABS Plastic	200.47	Recycle



7. Material/components which have an economic value at end-of-life.

2

**Recycling Information:**

Nr.	Component	Material	Wt. (g)	Comments
2	ABS Plastics	ABS Plastic	1402.1	Recycle



7. Material/components which have an economic value at end-of-life.

3

**Recycling Information:**

Nr.	Component	Material	Wt. (g)	Comments
3	Bin	ABS Plastic	426.59	Recycle

4

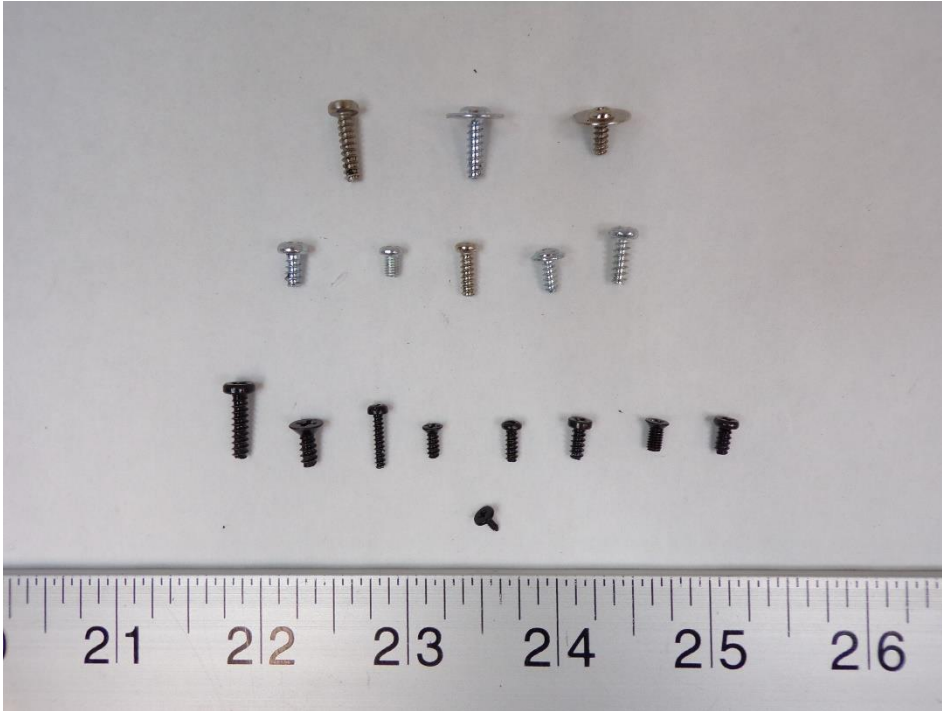


Nr.	Component	Material	Wt. (g)	Comments
4	Hardware	Metal	580.84	Recycle



7. Material/components which have an economic value at end-of-life.

5

**Recycling Information:**

Nr.	Component	Material	Wt. (g)	Comments
5	Screws	Metal	45.39	Recycle



7. Material/components which have an economic value at end-of-life.

6



Recycling Information:

Nr.	Component	Material	Wt. (g)	Comments
6	Caster Wheel	Mixed	27.17	Reuse



7. Material/components which have an economic value at end-of-life.

7

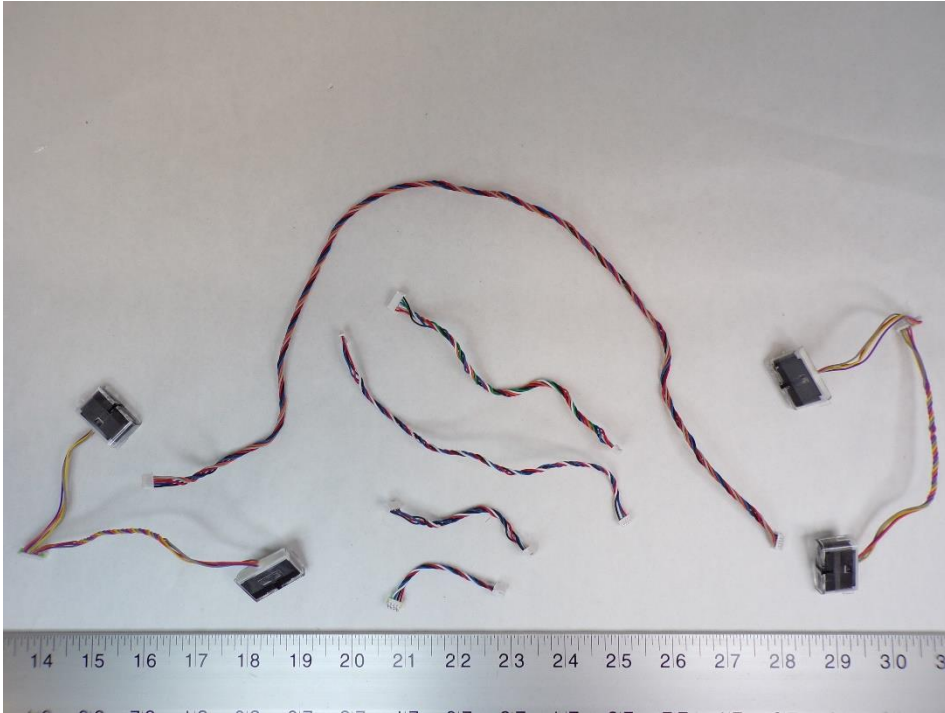
**Recycling Information:**

Nr.	Component	Material	Wt. (g)	Comments
7	Surface Brush	Mixed	51.14	Reuse



7. Material/components which have an economic value at end-of-life.

8

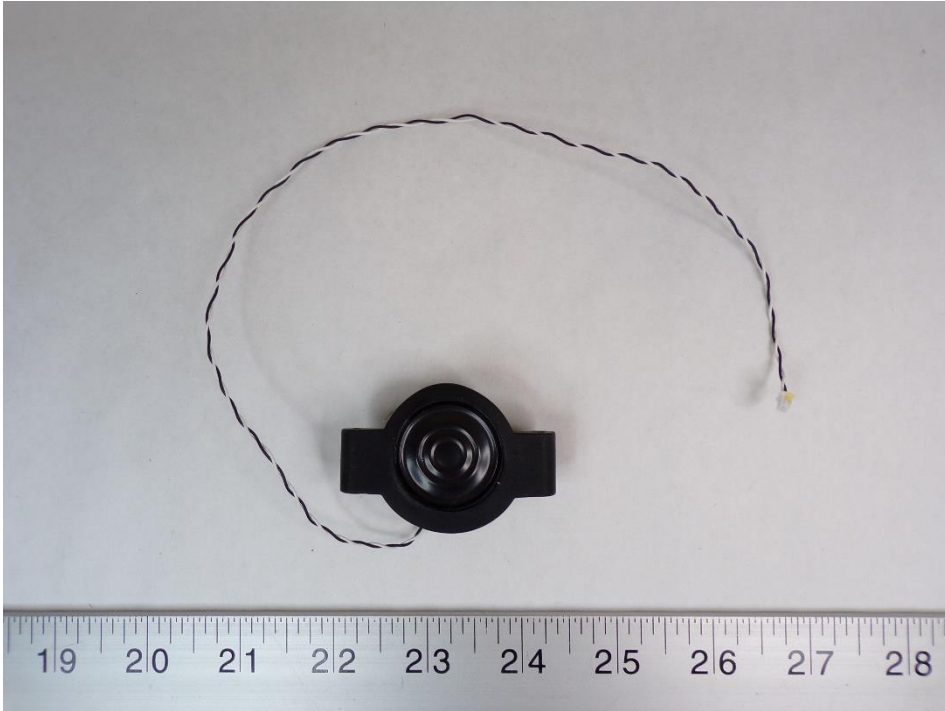
**Recycling Information:**

Nr.	Component	Material	Wt. (g)	Comments
8	Reusable Cables	Mixed	23.63	Reuse



7. Material/components which have an economic value at end-of-life.

9

**Recycling Information:**

Nr.	Component	Material	Wt. (g)	Comments
9	Reusable Speaker	Mixed	15.93	Reuse



7. Material/components which have an economic value at end-of-life.

10

**Recycling Information:**

Nr.	Component	Material	Wt. (g)	Comments
10	Power Cable	Mixed	90.15	Reuse

8. Recycling Information Summary:

Nr.	Component	Material	Wt. (g)	Comments
1	PCB / Mixed Components	PCB / Mixed	112.85	Treat Separately, 50% Recycle
2	Non Reusable Cables / Mixed Components	Mixed	107.86	Treat Separately, 60% Recycle
3	Motor Harnesses / Mix Components	Mixed	391.77	Treat Separately, 70% Recycle
4	Batteries	Battery	276.04	Treat Separately < Refer To Batteries Directive (2006/66/EC)>
Nr.	Component	Material	Wt. (g)	Comments
1	Rubber	Non-ID rubber	62.13	Waste
2	Filter	Non-ID Textile	12.64	Waste
3	Brush	Non-ID Plastic	5.12	Incinerate
4	Non-ID Plastic	Non-ID Plastic	103.60	Incinerate
5	Non-ID Textile Tape	Non-ID Textile	0.10	Waste
6	Non-ID Foams	Non-ID Foam	2.78	Waste

8. Recycling Information Summary:

Nr.	Component	Material	Wt. (g)	Comments
1	ABS Plastic	ABS Plastic	200.47	Recycle
2	ABS Plastics	ABS Plastic	1402.1	Recycle
3	Bin	ABS Plastic	426.59	Recycle
4	Hardware	Metal	580.84	Recycle
5	Screws	Metal	45.39	Recycle
6	Caster Wheel	Mixed	27.17	Reuse
7	Surface Brush	Mixed	51.14	Reuse
8	Reusable Cables	Mixed	23.63	Reuse
9	Reusable Speaker	Mixed	15.93	Reuse
10	Power Cable	Mixed	90.15	Reuse

Special notes:
Some other components can be recycled.
Please refer to the WEEE summary report.
All images for representative purposes only.